

Appendix

Map 1 FARC AND COCA CULTIVATION BY 2015

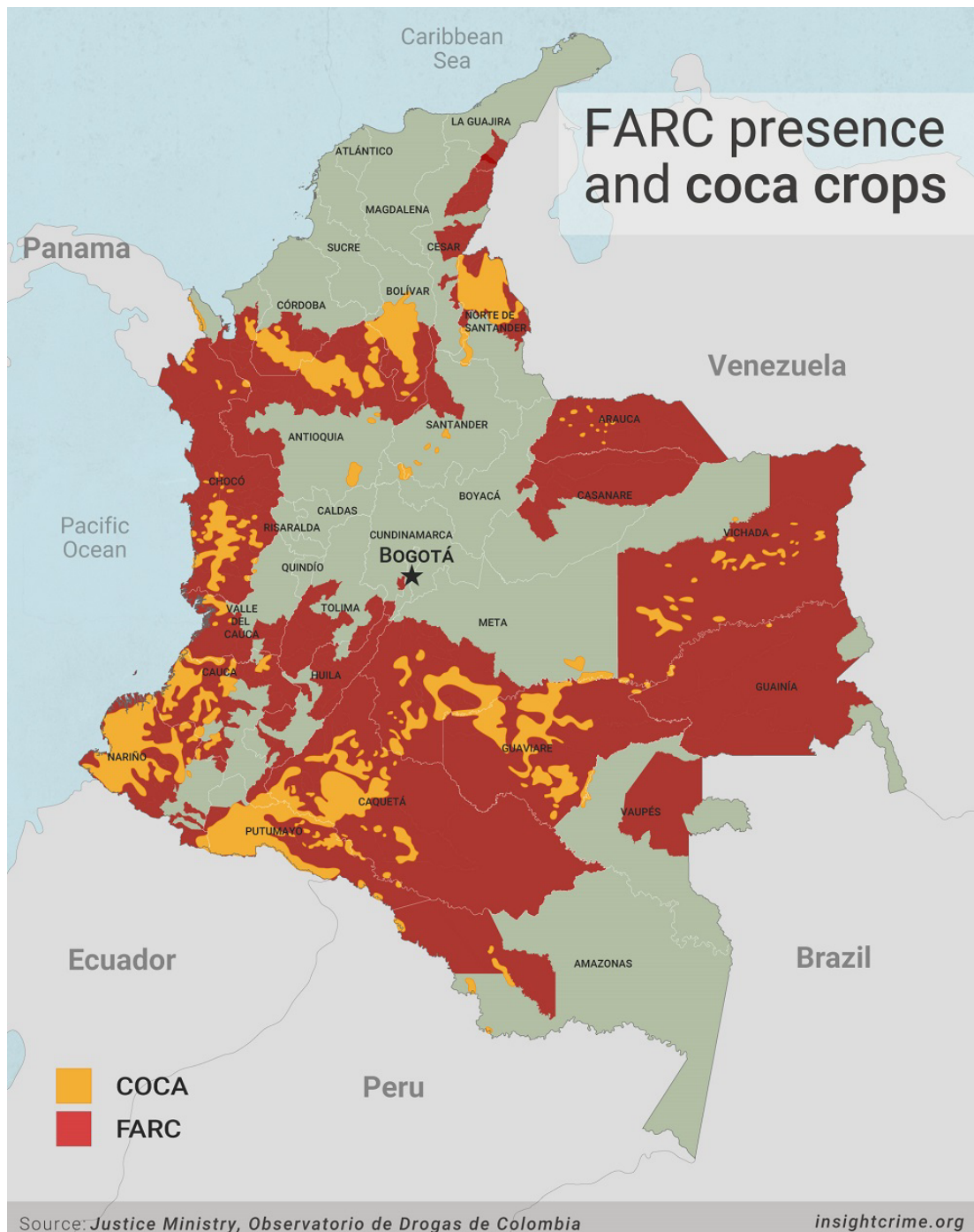


Figure 1

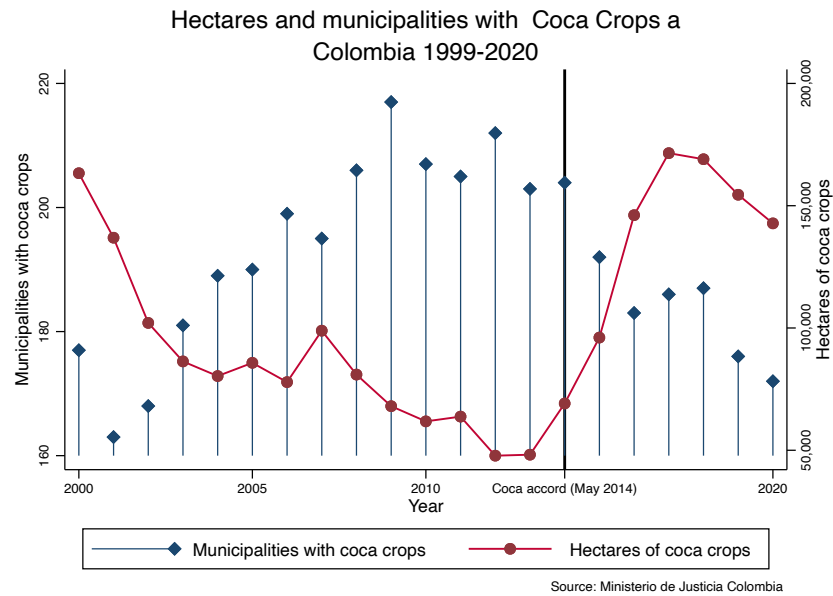


Figure 2

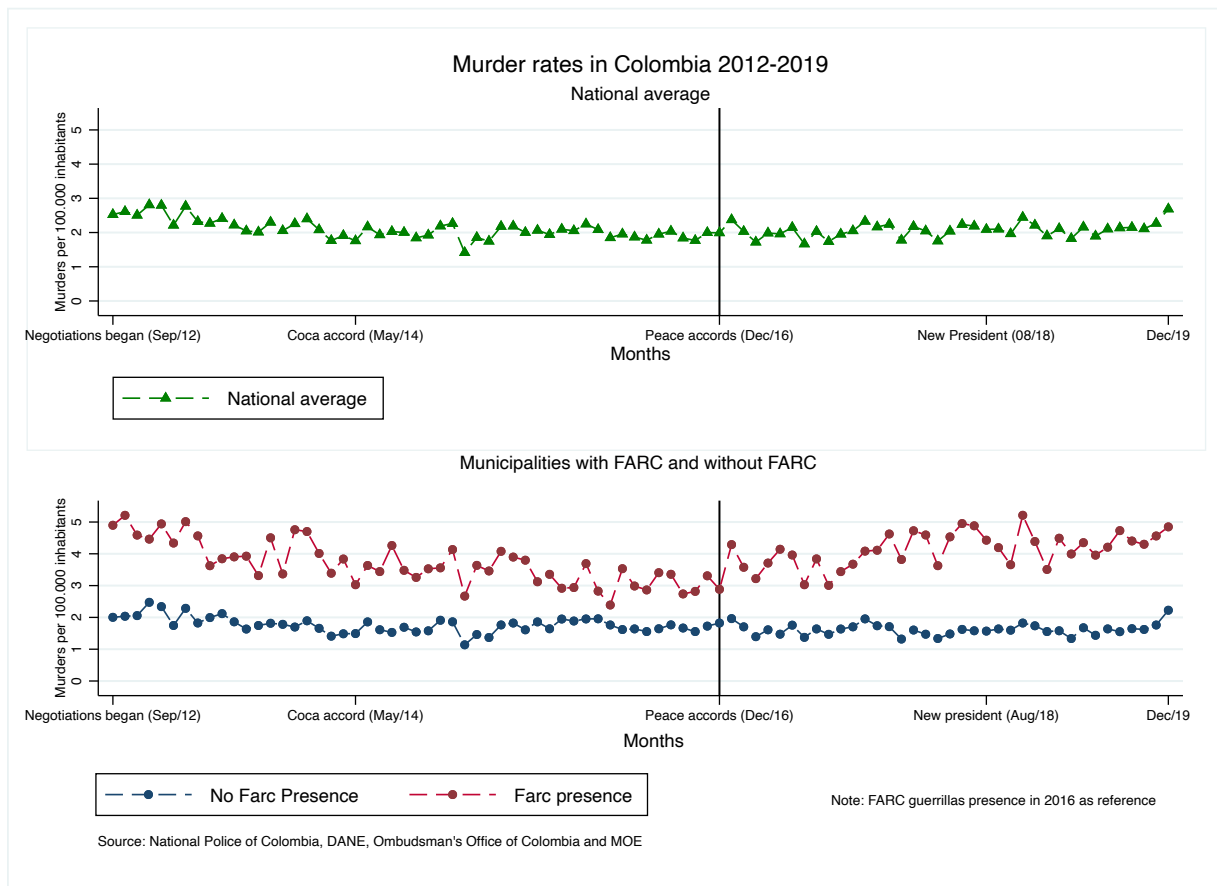


Figure 3
The rationality of the war in the post-conflict

	Hegemonic illegal actor (H)	Hegemony fragmented (1-H)
Coca crop production (P)	Moderate murder rates	Highest murder rates
No coca crop production (P-1)	Lowest murder rates	Lower murder rates
	Peace negotiation	Peace implementation

Table 1. Descriptive Statistics

Variable	Observations	Mean	Std. Dev.	Min	Max
Municipal monthly homicide rate per 100,000 inhabitants	98736	2.1	5.35	0	277.4
Municipalities with coca crops					
No	98736	.83	.376	0	1
Yes	98736	.17	.376	0	1
Squared Hectares of Coca crops	98736	105.79	730.202	0	23147.95
Farc guerrillas in 2016					
No	98736	.81	.4	0	1
Yes	98736	.19	.4	0	1
Disputed municipalities					
No disputed and no FARC	98736	.872	.334	0	1
Disputed (FARC and another groups)	98736	.01	.099	0	1
FARC and no other groups	98736	.119	.323	0	1

Figure 4. Regression discontinuity for homicide rates in municipalities with and without FARC

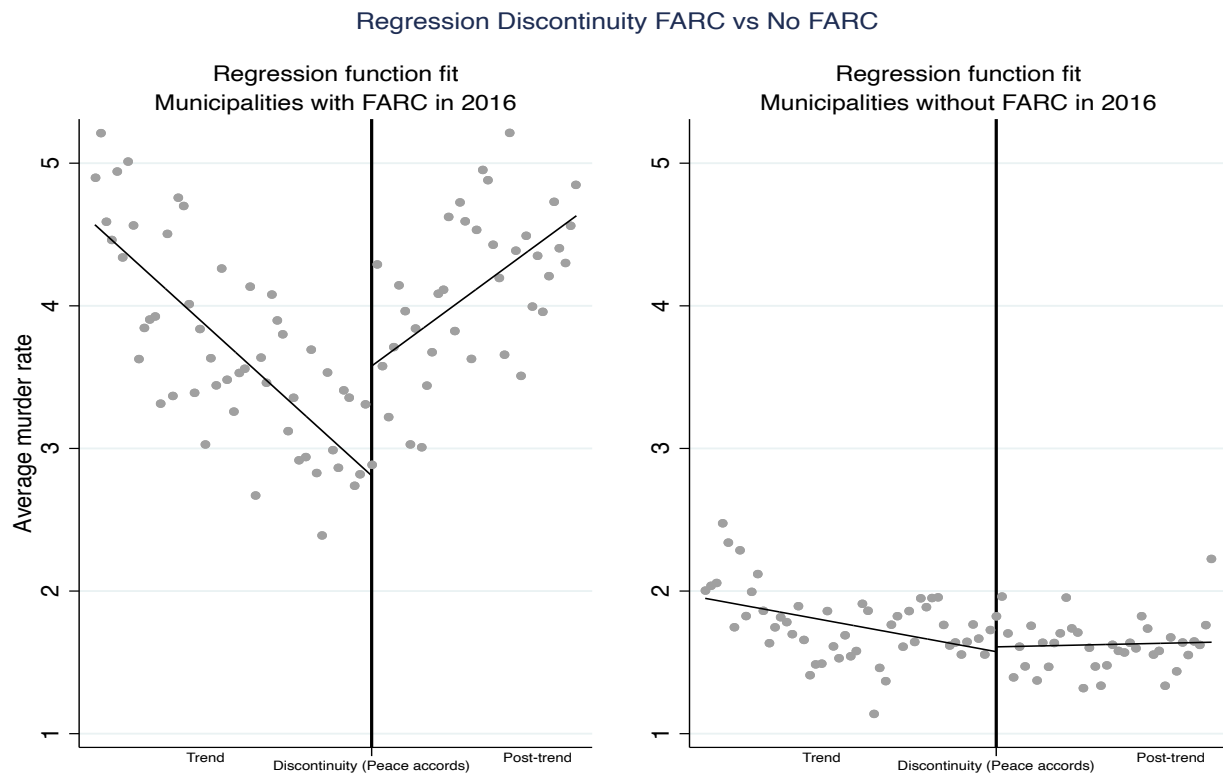


Table 2. Regression discontinuity for homicide rate in municipalities with and without FARC

	<i>Municipal monthly homicide rate</i>
Discontinuity with FARC	1.795*** (0.152)
Pre-trend with FARC	-0.066*** (0.003)
Post-trend with FARC	0.094*** (0.007)
Discontinuity without FARC	-0.215** (0.065)
Pre-trend without FARC	0.00007 (0.001)
Post-trend without FARC	0.0008 (0.003)
Constant	1.783*** (0.043)
Observations	
Standard errors in parentheses calculated with bootstrapping and 1000 repetitions	
* p<0.05, ** p<0.01, *** p<0.001	

Figure 5. Regression discontinuity for homicide rates in municipalities with and without coca crops



Table 3. Regression discontinuity for homicide rate in municipalities with and without FARC

	<i>Municipal monthly homicide rate</i>
Discontinuity with Coca crops	1.993*** (0.170)
Pre-trend with Coca crops	-0.061*** (0.003)
Post-trend with Coca crops	0.094*** (0.008)
Discontinuity without Coca crops	-0.210** (0.0658)
Pre-trend without Coca crops	-0.001 (0.001)
Post-trend without Coca crops	0.003 (0.002)
Constant	1.794*** (0.044)
Observations	98736

Standard errors in parentheses calculated with bootstrapping and 1000 repetitions

* p<0.05, ** p<0.01, *** p<0.001

Figure 5. Regression discontinuity for homicide rates in municipalities with and without FARC and coca crops

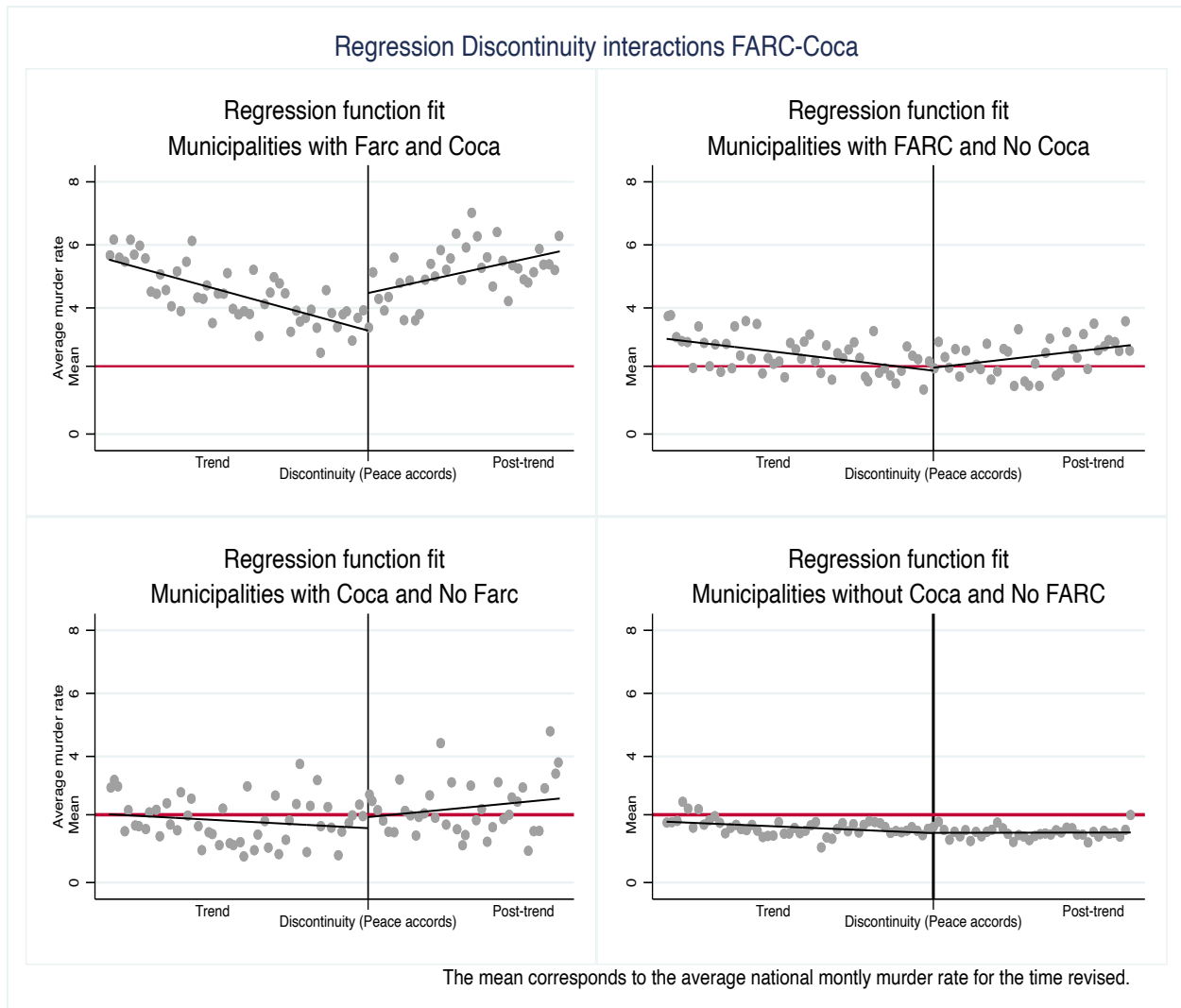


Table 4. Regression discontinuity for homicide rate in municipalities with and without FARC

	<i>Municipal monthly homicide rate</i>
Discontinuity FARC and Coca crops	2.70*** (0.201)
Pre-trend FARC and Coca crops	-0.09*** (0.003)
Post-trend FARC and Coca crops	0.125*** (0.01)
Discontinuity FARC and NO Coca crops	0.322 (0.167)
Pre-trend FARC and NO Coca crops	-0.027*** (0.003)
Post-trend FARC and NO Coca crops	0.046*** (0.008)
Discontinuity NO FARC and Coca crops	0.294 (0.247)
Pre-trend NO FARC and Coca crops	-0.007* (0.003)
Post-trend NO FARC and Coca crops	0.023 (0.013)
Discontinuity NO FARC and NO Coca crops	-0.248*** (0.068)
Pre-trend NO FARC and NO Coca crops	0.0006 (0.002)
Post-trend NO FARC and NO Coca crops	-0.0004 (0.003)
Constant	1.782*** (0.047)
Observations	98736

Standard errors in parentheses calculated with bootstrapping and 1000 repetitions

* p<0.05, ** p<0.01, *** p<0.001

Table 5. Municipalities with other illegal actor in municipalities with FARC presence in December 2016

	ELN	AGC	ELN and AGC
Yes	56	40	11
No	1	5	1
Total	57	45	12

Note: FARC were present in 133 municipalities without another illegal group