

Can conservatism make women more vulnerable to violence?

Victor Araújo¹ and Malu Gatto²

¹Affiliation not available

²University of Zurich

February 17, 2021

Abstract

Violence against women (VAW) affects at least 35% of women worldwide. The need to combat VAW is seemingly noncontroversial: As existing work shows, ideology does not explain governments' propensity to adopt anti-VAW legislation. Yet, effectively implementing anti-VAW legislation requires complex policy frameworks at odds with conservative values. Voters' preferences can meaningfully influence policy outputs, so can electoral conservatism make women more vulnerable to violence? Employing data from 5,570 Brazilian municipalities, we find that conservatism in the electorate is associated with the adoption of fewer anti-VAW policies. With data from a nationally-representative survey of Brazilian respondents (N=2,086), we then show that conservative voters are less likely to prioritize the need for tackling VAW. That is, the adoption of fewer anti-VAW policies in conservative municipalities reflects conservative voters' policy preferences. Critically, our results suggest that in contexts where the electorate holds conservative preferences, policy responsiveness may incur costs to women's lives.

Can conservatism make women more vulnerable to violence?*

Victor Araújo[†] Malu A. C. Gatto[‡]

Forthcoming in *Comparative Political Studies*

Abstract

Violence against women (VAW) affects at least 35% of women worldwide. The need to combat VAW is seemingly noncontroversial: As existing work shows, ideology does not explain governments' propensity to adopt anti-VAW legislation. Yet, effectively implementing anti-VAW legislation requires complex policy frameworks at odds with conservative values. Voters' preferences can meaningfully influence policy outputs, so can electoral conservatism make women more vulnerable to violence? Employing data from 5,570 Brazilian municipalities, we find that conservatism in the electorate is associated with the adoption of fewer anti-VAW policies. With data from a nationally-representative survey of Brazilian respondents (N=2,086), we then show that conservative voters are less likely to prioritize the need for tackling VAW. That is, the adoption of fewer anti-VAW policies in conservative municipalities reflects conservative voters' policy preferences. Critically, our results suggest that in contexts where the electorate holds conservative preferences, policy responsiveness may incur costs to women's lives.

Keywords: Political representation; ideology; violence against women; policy design; Brazil

*Authors' names are listed in alphabetical order. We are thankful to Daniel Bischof, Mariana Carvalho, Kendall Funk, Fabrizio Gilardi, Patrícia Nabuco, Timothy J. Power, and Debora Thomé for their helpful comments and suggestions. All remaining errors are our entire responsibility.

[†]University of Zurich. Email: victor.araujo@pw.uzh.ch.

[‡]University College London. Email: m.gatto@ucl.ac.uk.

Introduction

The World Health Organization (WHO) estimates that 35% of women worldwide have been subjected to intimate-partner violence or sexual violence by a nonpartner. The prevalence of intimate partner violence is particularly high in developing countries (García-Moreno et al., 2013). In Brazil, it is estimated that one woman was affected by violence every four minutes in 2017 and an average of 13 women was murdered every day (Cerqueira et al., 2019).

These numbers are alarming and the need to combat VAW is seemingly noncontroversial. Unlike demands related to women's sexual and reproductive rights (Bentancur and Rocha-Carpiuc, 2020), tackling VAW is not in inherent opposition to conservative or religious values (Htun and Weldon, 2010; Htun and Piscopo, 2014). In fact, efforts to protect women seem to be in alignment with traditional, paternalistic gender roles and views of women as fragile (Lodders and Weldon, 2019). The non-dogmatic nature of VAW partly explains the rapid spread of anti-VAW policies (Beer, 2019) and legislation on domestic violence is now present in at least 155 countries (World Bank, 2020). As cross-national and within-country studies show, ideology does not explain governments' propensity to adopt anti-VAW legislation (e.g., Htun and Weldon, 2012; Beer, 2017). In other words, conservative politicians do not seem to be less supportive of combating VAW than their more progressive counterparts.

While ideology may not impact support for anti-VAW legislation *per se*, it may shape actors' attitudes towards the policy frameworks necessary for the implementation of legislation. For example, as an emerging literature shows, once legislation is adopted, conservative groups with ties to state actors may work to undermine policies perceived to threaten the maintenance of family structures (O'Brien and Walsh, 2020; Neumann, 2018). There is still much that we do not know about the relationship between conservatism and anti-VAW policies, however:

Although the literature has extensively covered the ways in which women's mobilization, international organizations, and transnational diffusion have prompted legal transformations on gender-based violence around the world, identifying the factors that curb progress on anti-VAW has remained a less explored line of work (O'Brien and Walsh, 2020, p. 114). In this article, we make further strides in this direction by assessing whether and how *voters'* conservative preferences impact the adoption of policy instruments to tackle VAW in Brazil. Is so doing, we also respond to recent calls to understand the role of ideology in the postreform stage of the policy process (Bentancur and Rocha-Carpiuc, 2020).

A key tenet of representative democracy is the notion that public policy reflects voters' interests and preferences (Przeworski et al., 1999). As a large body of work shows, the electorate shapes the actions of policymakers in meaningful ways (e.g. Lax and Phillips, 2012; Ezrow et al., 2011). Voters that share ideological principles also tend to share policy preferences (Luna and Zechmeister, 2005), so it is likely that conservative voters' attitudes towards tackling VAW are different from those of their progressive counterparts. In turn, effectively enacting anti-VAW legislation requires the implementation of complex policy frameworks (Tavares et al., 2019). If the political will of politicians to enact these policy infrastructures is tied to the preferences of their constituents, then it is possible that conservative voters' opposition to particular types of policy instruments (O'Brien and Walsh, 2020), unwillingness to fund anti-VAW initiatives (Macaulay, 2010), and/or non-prioritization of VAW as a policy area (Page and Shapiro, 1983) could have dire consequences to governments' efforts to eradicate gender-based violence.

Understanding whether voters' preferences can contribute to the weakening of anti-VAW provisions is an urgent exercise: Electoral conservatism is rising around the world (e.g. Kováts, 2018; Biroli and Caminotti, 2020), so assessing whether it could pose threats to a non-dogmatic

policy area is a hard test of ongoing concerns about the future of women's rights.

We investigate the relationship between voters' preferences and public policy outcomes with a two-step analysis. First, we examine whether electoral conservatism impacts the adoption of policy instruments to tackle VAW in Brazilian municipalities. When the Maria da Penha Law on Domestic and Family Violence (Federal Law 11.340) was approved in Brazil in 2006, it recognised domestic violence as gendered, typified different forms of violence, and identified a number of justice and protection mechanisms specifically targeted at tackling VAW. However, although the law applies nationally, the decision to select which and how many policy instruments to adopt (if any) remains under the authority of municipalities. As a result, there is wide variation in the uptake of these instruments across the country. Combining data from the Brazilian Institute of Geography and Statistics (IBGE) on the presence and number of policy instruments in each municipality with data on constituencies' "electorally revealed conservatism" developed by Power and Rodrigues-Silveira (2019), we assess whether municipalities with conservative electorates are less prone to adopting policy instruments to combat VAW (N=5,570).

Employing novel survey data from a nationally representative sample of Brazilian respondents (N=2,086), we then investigate whether holding conservative preferences shapes voters' attitudes towards VAW and the need to adopt further legislation to tackle it. This approach allows us to not only assess the association between constituencies' ideology and policy adoption, but also to examine whether it is indeed voters' policy preferences that likely yield aggregate-level observed outcomes. In other words, by conducting analyses at the municipal and individual levels, we evaluate whether policy is responsive to voters (Lax and Phillips, 2012).

Aligned with current preoccupations about the potential threat of conservatism to women's rights, we find that municipalities with more conservative electorates adopt fewer policy instruments to tackle VAW—a result that remains significant across model specifications and after controlling for several municipal-level variants, including rates of femicide, bureaucratic capacity, and mayors' gender and conservative ideology. More specifically, we find that the negative impact of electoral conservatism on protection policies is stronger than its impact on justice policies, suggesting that preferences for policy responses to VAW are ideologically diverse. In complementary analyses, we also show that electorally conservative municipalities are not less likely to adopt policies in other areas, so weaker anti-VAW policy frameworks in more conservative municipalities do not seem to be a reflection of conservatives' general concerns about government spending.

Consistent with our municipal-level results, our individual-level analyses show that conservative respondents are more likely to deem existing laws sufficient to protect women and more prone to believing that press coverage of gender-based violence is exaggerated. These findings indicate that the lower presence of policy instruments in conservative municipalities emerges from conservative voters' non-prioritization of VAW as a problem that should be tackled by the government. Critically, our results suggest that in contexts where the electorate holds conservative preferences, congruous democratic representation may impose risks to women's lives. These findings have implications for the academic literature on political representation and ongoing debates about the potential consequences of the rise of conservatism for women's rights.

Conservative Representation: A Threat to Women's Rights?

Estimating the impact of actors' ideological identities on their policy preferences is not always clear-cut. The first challenge that arises is conceptual. "Conservatives" encompass actors from a broad range of parties and priorities, so the definitions and measurements of the concept vary widely¹. Nonetheless, scholars tend to characterize "conservatives" as those who fall between the "center" and "right" placements of the ideological scale, which tend to be associated with preferences for preserving socio-cultural—and, often, religious—traditions, including patriarchal gender hierarchies and the centrality of hetero-normative family structures (O'Brien, 2018; Luna and Kaltwasser, 2014).

Perhaps related to inconsistencies in definitions and measurements of ideology, particularly across countries (Beer, 2017), a second challenge arises: Establishing a clear association between ideological preferences and women's rights (Celis and Childs, 2018). On the one hand, as a large body of literature shows, conservative politicians and parties tend to have fewer connections to women's civil society organizations and other progressive movements (e.g. Beckwith, 2000; Weldon et al., 2011; Medie and Walsh, 2019) and are, as a consequence, less likely to incorporate their demands into their policy agendas (e.g. Caul, 2001; Blofield et al., 2017; Beckwith and Cowell-Meyers, 2007).

On the other hand, as O'Brien (2018) describes: "There is mounting skepticism about the predictive power of ideology" (p. 27) in explaining preferences on women's rights and gender equality. Motivated by institutional and electoral incentives, conservative parties increasingly recruit women candidates and employ gendered perspectives into their rhetoric and platforms (e.g. Bryson and Heppell, 2010; Celis and Childs, 2012; Celis and Erzeel, 2015).

¹As Weldon (2002b) discusses, the same, of course, applies to the concepts of "progressive" or "left-wing" (p. 22).

In particular, ideology seems to be a weak predictor of politicians' behaviour towards combating VAW, a non-dogmatic policy area. For example, in their cross-national study of 70 countries, Htun and Weldon (2012) find governments' dominant ideology to be insignificant to the adoption of anti-VAW legislation. In cross-national studies with different sets of countries, Weldon (2002b) and Mazur (2002) also show that the political ideology of the government in power is not a crucial factor prompting or preventing the adoption of VAW-related legislation. Beer (2017) finds similar results in her study of Mexican states. As she conveys, while bills tend to be initiated by left-wing feminist legislators, the strength of the left parties in state legislatures is not associated with the level of comprehensiveness or implementation of VAW laws. In sum, existing analyses suggest that the ideology of politicians is not a determinant factor of support for anti-VAW legislation.

But to effectively tackle VAW, legislation has to be supported by on-the-ground targeted instruments of protection, prevention, and justice. Since gender-based violence can have long-standing physical, psychological, and economic impacts on women, their children, and other family members, policy responses also have to be multi-faceted. To prevent revictimization, experts recommend that policy frameworks be comprehensive and provide women with safe spaces and efficient protocols to register offences; protection for them and their dependents; specialised medical and psychological support; and, targeted judicial institutions (Hughes et al., 2016; Hayes, 2007; García-Moreno et al., 2013). For example, helplines, women's police stations, dedicated shelters, special courts, and legal representation are some types of instruments that can help bridge the "implementation gap between law and practice" (Tavares et al., 2019).

Some of the policy instruments advocated by international organisations and recommended by domestic laws may challenge conservative and religious preferences, however. VAW is

overwhelmingly perpetrated by survivors' partners or former partners (Hughes et al., 2016), so tackling gender-based violence requires interventions in the domestic sphere, a space traditionally deemed as private (Neumann, 2018). But the maintenance of family units is a core principle of many conservatives and religious actors (Luna and Kaltwasser, 2014). So, while conservatives may support policies that promote reconciliation and mediation between survivors and their perpetrators, they may strongly oppose "anti-family" mechanisms, such as protective measures (O'Brien and Walsh, 2020; Neumann, 2018).

Conservatives may also be less willing to make the necessary budgetary commitments to tackle VAW. As Beer (2017) argues, adopting anti-VAW legislation is a "low cost way to appease to the feminist movement" (p. 515), but instituting instruments to effectively implement such legislation is not. In fact, as Tavares et al. (2019) detail, the allocation of government budget to fund targeted policy instruments is fundamental to ensure the successful implementation of anti-VAW legislation. Yet, conservative actors' willingness to support women's rights' policies may wane when such interventions require government spending (Macaulay, 2010).

Finally, the nonadoption of anti-VAW policy instruments may not necessarily result from attitudes towards public spending: Policy problems are not equally salient to voters (Jones and Baumgartner, 2005) and ideology may impact the extent of voters' attention to a particular issue. So, even if conservatives give *some* emphasis to women's issues, they may still fall behind progressives in prioritizing these themes (O'Brien, 2018; Childs et al., 2010). Crucially, conservative actors' appropriation of gendered agendas may be rhetorical and not translate into strong policy preferences and action (Akkerman, 2015; Bryson and Heppell, 2010). That is, if VAW is not a salient issue among conservatives, the nonadoption of policy instruments to tackle it may result not from a normative opposition to the issue, but from its non-prioritization

on the policy agenda (Page and Shapiro, 1983; Jones and Baumgartner, 2005).

Crucially, conservatives' opposition to some type of policies, their lack of willingness to fund anti-VAW instruments, and/or their non-prioritization of this policy area may ultimately have consequences to anti-VAW policy frameworks. As the literature on elite-mass congruence shows, it is not only the ideology of politicians that shapes policymaking: Voters' preferences also matter (Erikson et al., 1993). In the context of the growing popularity of conservatism in the electorate, understanding whether the electorates' ideological composition can impact the adoption of policy instruments to tackle VAW is thus an important task.

Electoral Conservatism and Anti-VAW Policies

At the core of liberal representative democracy is the “pact” that citizens' preferences are to be translated into policies on-the-ground (Dahl, 1989). Behind this notion is the idea that, through free and fair elections, voters can both signal their policy priorities by selecting certain campaign platforms over others, as well as sanction incumbents who fail to enact their interests (Przeworski et al., 1999; Huber and Powell, 1994; Adsera et al., 2003). Studies employing public opinion surveys have shown that while policymakers tend to have stronger and more consistent ideological convictions than citizens, partisans still tend to share core ideological principles (e.g. Luna and Zechmeister, 2005). Crucially, as studies of different countries and contexts have shown, voters' preferences can shape different types of policy output—including party manifestos, politicians' public statements, bill sponsorship, legislators' behaviour on roll-call voting, and policy adoption (e.g. Erikson et al., 1993; Hager and Hilbig, 2020; Bernardi et al., 2020; Luna and Zechmeister, 2005). For example, through a review of existing studies in multiparty elections, Adams et al. (2004) finds that parties shift their policy positions to

reflect voter preferences. Through a cross-sectional analysis of 15 countries, Ezrow et al. (2011) further detail this relationship between voters' preferences and policymaking, showing that mainstream parties' policy positions are responsive to the preferences of the mean voter—while more “niche” parties are more responsive to the preferences of their own supporters. In alignment with these results, Lax and Phillips (2012, 2009) assessments of policy congruence across U.S. states show that this relationship also applies subnationally: Citizens' opinions towards specific policies in a number of areas are closely associated with their state-level adoption.

As previously discussed, although the relationship between political ideology and attitudes towards women's rights in general, and VAW in particular, may be ambiguous, conservative voters may still share core values about the preservation of family units, government spending, and issue salience that may impact their overall preferences towards anti-VAW policy frameworks. Combining insights from the literatures on gender and politics, policymaking, and elite-mass congruence, we expect conservatism to shape voters' attitudes towards VAW and explain variation in the uptake of anti-VAW policy instruments across local constituencies. Formally, we hypothesize that:

- **H1 (aggregate-level):** Governments representing conservative electorates tend to adopt fewer anti-VAW policy instruments.
- **H2 (individual-level):** Conservative voters are less likely to support the adoption of policies to tackle VAW.

The Case of Brazil

Emphasizing the persisting prevalence of VAW globally, women's movements from around the world have worked to make combating VAW a top priority in the global policy agenda. Their efforts have been successful (Htun and Weldon, 2012; Weldon, 2002a; Weldon et al., 2011; Medie and Walsh, 2019). Particularly since the 1979 United Nations' (UN) Convention for the Elimination of All Forms of Discrimination Against Women (CEDAW)², the Vienna Declaration from 1993, and the Beijing Declaration and Platform for Action from 1995, there has been a global effort to better understand the dynamics of gender-based violence and to identify targeted policy instruments to eradicate it (Macaulay, 2000).

Latin America has been responsive to this global trend: In 1994, all countries in the region adopted the Inter-American Convention on the Prevention, Punishment and Eradication of Violence against Women, which explicitly recognises VAW as a human rights' violation (Deus and Gonzalez, 2019). Latin American activists and scholars have also been at the forefront of debates on gender-based violence, modifying Russell's concept of femicide as "the killing of females by males because they are female" (Russell and Harmes, 2001) to *feminicide*, thus approximating the term to the meaning of "genocide" and emphasizing that the homicides of women because they are women characterise the disappearance of a specific group (Lagarde, 2006). To date, 13 countries in the region have adopted comprehensive policies to tackle VAW and 18 countries typify femicide/feminicide as a specific crime (Deus and Gonzalez, 2019).

Brazil's efforts to combat VAW have followed this regional (and global) trend. In 1985, São Paulo inaugurated the world's first Women's Police Station—a type of institution that is now

²As Baldez (2011) notes, VAW is not explicitly mentioned in CEDAW's articles, but in 1992 the CEDAW Committee made tackling VAW a central aspect of their approach to reducing gender-based discrimination (p. 422).

present in at least 16 other countries (Córdova and Kras, 2020, p. 776). In 2006, the country sanctioned Law 11.340, largely known as the Maria da Penha Law, a progressive anti-VAW law. In many ways, the policymaking processes that yielded anti-VAW policies in Brazil are characteristic of the broader patterns identified by the literature: In both instances, policy innovation was preceded by pressure from international organizations, regional institutions, demands from women's movements, and lobbying from domestic NGOs and feminist scholars (Macaulay, 2000; MacDowell Santos, 2010). The long process that ultimately led to the adoption of Law 11.340 is particularly illustrative of the important role of these factors: the Law's name is in homage to Maria da Penha Maia Fernandes, a survivor of intimate-partner violence and two murder attempts whose case was only reexamined in Brazil after pressures from the Organization of American States and the Inter-American Commission on Human Rights. The case also prompted regional institutions to pressure Brazil to adopt anti-VAW specific legislation—which it only complied years later in 2006, when, with the election of the left-wing Worker's Party to the presidency, feminist movements gained a greater level of state access (Friedman, 2009).

As a product of consultation between the government, activists, and representatives from international organisations, the Maria da Penha Law is comprehensive. Notably, it explicitly identifies VAW as a human rights' violation. The law also recognises that gender-based violence has particular characteristics, and that, as such, combating it requires a comprehensive framework of specialised institutions. In particular, the law identifies and recommends the adoption of a number of protection and justice instruments specifically targeted at combating VAW (Machado et al., 2016, p. 187). Among others, these instruments include Women's Police Stations, women's shelters, specialised courts, and well-being service centers³.

³For a full list of instruments, see Table 1. For a description of these instruments, see:

But Brazil is a federal system and Brazilian municipalities have substantial power over the adoption of policies and programs (Funk and Philips, 2019)—including those pertaining to gender equality and women’s rights’ protection (Funk et al., 2017; Macaulay, 2000) and crime prevention and security⁴. That is, while the Maria da Penha Law applies nationally, the decision of adopting the Law’s recommended policy instruments has remained under the authority of municipalities. As a result, there is wide variation in policy uptake across the country. Fourteen years after the Maria da Penha Law was enacted, only 21% (N=1,163) of Brazil’s 5,570 municipalities have adopted at least one of the instruments recommended to implement the law’s mandate. Crucially, lack of local commitment to the implementation of policy instruments can render national legislation “dead letter” (Macaulay, 2000, p. 153).

In turn, voters’ influence over policymaking may be particularly strong at the local level where voters’ closer approximation to their representatives allows them to better allocate responsibility and where representatives may be more knowledgeable about the preferences of their constituents across a wider range of issues (Fisman and Gatti, 2002). In addition to bearing strong constituent pressures, local-level policymakers have less visibility than their national counterparts and likely face less international and transnational pressures (Steunenberg, 1996; Souza, 2016). As a result, policymaking at the local level may be particularly prone to being shaped by voters’ ideological preferences (Fording et al., 2007; Franceschet and Piscopo, 2013).

Brazil offers an ideal case to test whether voters’ ideology shapes anti-VAW policy uptake

<https://www12.senado.leg.br/institucional/omv/acoes-contra-violencia/servicos-especializados-de-atendimento-a-mulher>.

⁴As Peres et al. (2014) conveys, since the early 2000s, Brazilian municipalities have become increasingly involved in the development and implementation of policy on public security. For example, while constitutionally the decision of instituting police stations lies with state governments, municipalities are often the ones financing the operating costs of these stations, including paying for buildings, vehicles, and other infrastructure. This also extends to Women’s Police Stations, which are more often adopted as the product of negotiations between state and municipal governments, and which rely on funding and administration from municipal authorities (Pasinato et al., 2008, p. 13).

at the local level. As Powell Jr (2004) describes, one of the obstacles to examining whether electorates' preferences translate into equivalent policy adoption is that "a multidimensional preference configuration can yield almost any configuration of outcomes" (p. 291). Therefore, assessing the relationship between ideological tendencies and policy adoption requires a context where potential outcomes are limited to a set of options (i.e., where variation is possible, but policy configurations are restricted). The Brazilian case offers this condition, since the Maria da Penha Law recommends a finite set of policy instruments to be adopted for tackling VAW.

In addition, measuring political ideology cross-nationally may create inconsistencies, but within-country comparative studies tend to employ country-specific measures of ideology and thus circumvent problems of conceptual cohesion (Beer, 2017). Nonetheless, an obstacle that arises in within-country studies is capturing variation in the ideological preferences of the electorate—a problem that is particularly salient in analyses of subnational units. Recently, Power and Rodrigues-Silveira (2019) have used data on the electoral results of Brazilian municipal elections to develop a measure of constituencies' "electorally revealed conservatism." These data allow us to capture variation in the ideological preferences of subnational electorates.

We test our hypotheses with a two-stage empirical strategy. First, we examine the association between constituencies' ideological preferences and the adoption of policy instruments to tackle VAW in Brazilian municipalities (Study 1). Second, we investigate whether individuals' conservative preferences are associated with lower levels of support for legal protections for women (Study 2). This step allows us to rule out the possibility of ecological fallacy bias in our municipal-level estimates.

Study 1: Municipal-level Analysis

For our municipal-level analyses, we combine data from a number of sources. First, to derive our outcome variables, we employ data from the IBGE. As part of the 2018 Survey of Basic Municipal Information (*Pesquisa de Informações Básicas Municipais*), the IBGE collected data on the presence or absence of a set of policy instruments identified by the federal government to tackle VAW (N=5,570).

Table 1: Policy instruments to tackle VAW

Type of policy instrument	Policy instrument description	N	%
Protection	Municipal Council on Women's Rights	1313	23.58
Protection	Specialized Women's Service Center	385	6.91
Protection	Women's Shelters	134	2.41
Protection	Sexual Violence Care Services	540	9.70
Justice	Women's Police Station	460	8.26
Justice	Special Court for VAW	250	4.49
Justice	Specialized Gender Prosecutor's Office	188	3.38
Justice	Special Center for Women's Rights' Protection (Public Attorney)	87	1.56
Justice	Maria da Penha Police Patrol	182	3.27
Justice	Aggressor Accountability Service	113	2.03
Frequency distribution of policy instruments		N	%
	Municipalities with 0 protection instruments	3901	70.06
	Municipalities with 1 protection instrument	1174	21.08
	Municipalities with 2 protection instruments	328	5.89
	Municipalities with 3 protection instruments	119	2.14
	Municipalities with more than 3 protection instruments	46	0.83
	Municipalities with 0 justice instruments	4902	88.04
	Municipalities with 1 justice instrument	349	6.27
	Municipalities with 2 justice instruments	163	2.93
	Municipalities with 3 justice instruments	71	1.28
	Municipalities with more than 3 justice instruments	83	1.49

Source: Elaborated by the authors based on IBGE, 2018. The unit of analysis is the municipality.

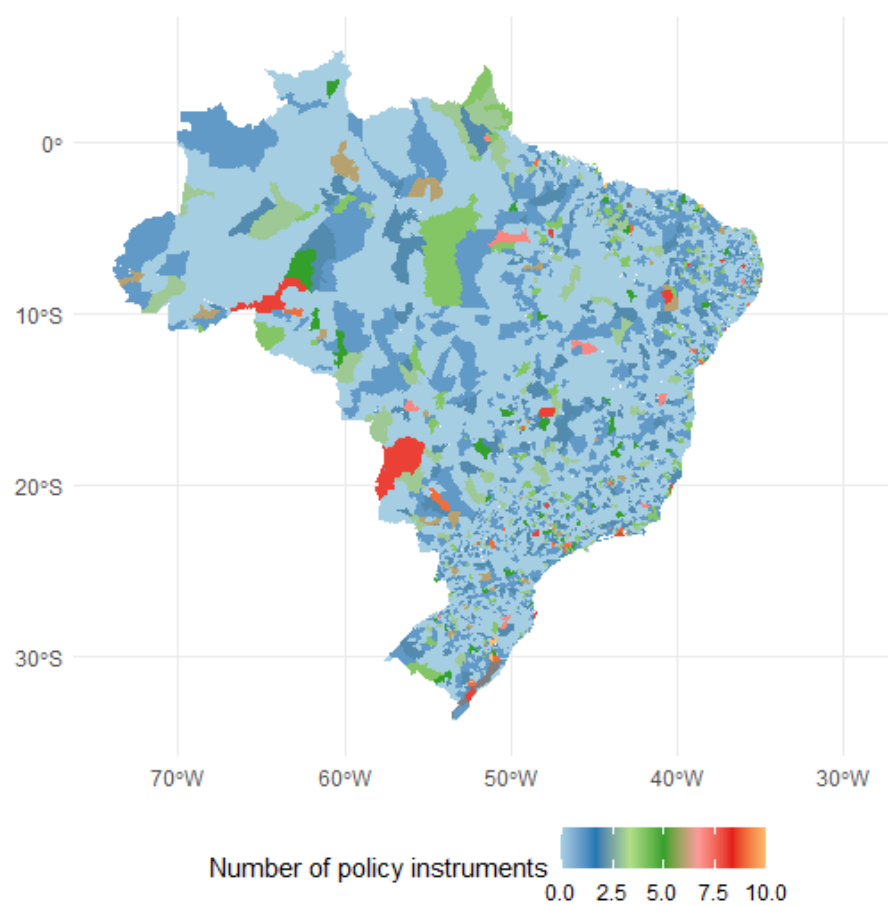
Using these data, we derive three count variables to measure variation in anti-VAW policy uptake. The first variable, *All policies*, ranges from 0 to 10 and corresponds to the total number (i.e., sum) of policy instruments adopted in each municipality. The variable has a mean of 0.656. Our second and third dependent variables distinguish between the types of policies and,

respectively, capture the total number of *Protection* and *Justice* instruments adopted in each municipality. The variable *Protection* ranges from 0 to 4 and has a mean of 0.426 and *Justice* ranges from 0 to 6 and has a mean of 0.230. The construction of these variables is consistent with the methodology employed by Htun and Weldon (2012) and Meier and Funk (2017).

Table 1 provides details on each of these instruments and their frequencies across municipalities. Overall, 21% (N = 1,163) of Brazilian municipalities adopted at least one policy instrument to tackle VAW. While *Protection* policies are more prevalent—this type of policy instrument was implemented by 30% of municipalities—, *Justice* instruments are not rare events in our sample: 12% of Brazilian municipalities have adopted one or more *Justice* instruments.

Figure 1 illustrates the territorial distribution of the variable *All policies* across Brazil. As shown, these policies are not concentrated in the wealthiest municipalities located in more developed areas of the country: 43% (N = 505) of the municipalities that adopted at least one policy instrument are located in the North or Northeast, Brazil's poorest regions. The same pattern of dispersion is observed within Brazil's five regions, so we do not identify geographical clusters of policy distribution.

Figure 1: Territorial distribution of policy instruments to tackle VAW in Brazil



Note: The unit of analysis is municipality (N=5,570).

To capture voters' ideological preferences, our main explanatory variable, we employ a measure of *electoral conservatism* developed by Power and Rodrigues-Silveira (2019). To derive this measure, the authors first establish ideological scores for each party, a process that is based on legislators' placements of Brazilian parties based on their electoral and policy reputations⁵. Electorates' levels of ideological conservatism are then calculated as a product of the ideological scores of the parties for which they voted: Each party's ideological score is multiplied by the share of votes it obtained in the municipal legislative elections of 2016⁶. The higher the proportion of votes won by a party, the higher its influence in shaping the final ideological score assigned to a given municipal constituency. More specifically, the measure was conceived in such a way that -1 (negative 1) corresponds to extreme left ideology, 1 (positive 1) to extreme right ideology, and a value of 0 corresponds to centrist ideology: As Power and Rodrigues-Silveira (2019) describe, higher values on the scale indicate constituencies' "electorally revealed conservatism."

The adoption of police instruments to combat VAW could also be explained by socio-demographic factors⁷. First, it is possible that policy instruments are more likely to be adopted where VAW is particularly prevalent. We control for this with a measure of *femicide rate*, which we retrieve from the *Mapa da Violência 2015* (Waiselfisz, 2015). Population demographics could also shape issue salience and policy demand (Lax and Phillips, 2012). For example, it is possible that demand for policies to tackle VAW is higher where women represent a higher share of the population. In addition, social movements tend to be more active in more urban and highly populated areas (Uitermark et al., 2012). Previous work has shown

⁵Legislators' scores of their own parties are discounted, as authors detail.

⁶These data are only available for 2016 but, as Power and Zucco Jr (2012) show, conservative preferences of the Brazilian electorate have become increasingly stable (p. 6).

⁷Socio-demographic factors tend to change slowly (Inglehart and Norris, 2003), so we employ the most recent available data.

that women's movements are crucial for policy adoption (Htun and Weldon, 2012; Weldon, 2002a; Weldon et al., 2011; Medie and Walsh, 2019), so it is also possible that policy demand varies depending on urbanization and population size. Accordingly, we employ data from the 2010 IBGE census to add controls for the share of women in the population (*% women population*), the share of the population who live in urban areas (*% urban population*), and *population size (log)*⁸. Existing scholarship has also shown that religiosity may impose obstacles to women's rights (Htun and Weldon, 2011), so we include a control for the share of evangelicals in the population (*% evangelical*)⁹. Meanwhile, some literature conveys that inequality and socioeconomic modernization may shape not only individuals' levels of vulnerability, but also the government's propensity to adopt women-targeted policies (Inglehart and Norris, 2003), so we also control for the level of human development (*HDI*).

It is also plausible that other political factors—besides *electoral conservatism*—shape policy uptake. First, municipalities with higher levels of bureaucratic capacity may be in a better position to adopt a greater number of policy instruments (Htun and Weldon, 2010; Meier and Funk, 2017)¹⁰. To capture this, we employ data from the IBGE's survey of municipalities to derive *bureaucratic capacity*, which measures the *per capita* number of employees in the public sector who completed tertiary education. It is also possible that it is not voters' ideology *per se* that reduces the prevalence of policies to tackle VAW in conservative municipalities, but that conservative voters are also less likely to elect women mayors and city councilors—and that,

⁸Population size may also be capturing other dynamics. For example, smaller municipalities may be more conservative than urban centers (Power and Rodrigues-Silveira, 2019, p. 13). In addition, while municipality size is not a criterion of for the adoption of anti-VAW policy instruments, some instruments, such as women's police stations, are more likely to be present in larger municipalities (Córdova and Kras, 2020, p. 785).

⁹As Vaggione and Machado (2020) and Machado et al. (2018) show, evangelicals in Latin American are particularly more likely (than Catholics, for example) to emphasize moral issues in the political and policy arenas.

¹⁰Other political factors, such as policy centralization and national women's agencies, may also impact policy uptake (Franceschet, 2010; Franceschet and Piscopo, 2013). In our within-country analysis, these factors are held constant.

in turn, women are more likely to promote women's substantive representation (Schwindt-Bayer, 2010). To account for this, we use data from the *Tribunal Superior Eleitoral* (Superior Electoral Tribunal, TSE) to derive % *elected women (Mayor)* and % *elected women (Council)*, which respectively measure the share of mayoral and city council offices that were occupied by women since the adoption of the Maria da Penha Law¹¹. It is also possible that our results are not driven by electorates' ideological predispositions, but by the conservative leanings of elected officials. As such, we use TSE data and parties' ideological classifications established by Power and Rodrigues-Silveira (2019) to derive measures of % *elected conservative (Mayor)* and % *elected conservative (Council)*¹². Finally, the existing literature has identified religious influence within the state as a source of rivalry to progressive protective policies for women (O'Brien and Walsh, 2020). To control for this, we follow Boas (2014) and use data from the TSE to identify city councilors whose candidate (i.e., ballot) names included the title of "pastor" and derive the measure % *elected Evangelical (Council)*¹³.

Formally, we run ordinary least squares models (OLS) as described by the following general equation:

$$Y_i = \beta_0 + x_i\beta + W_i + e_i \quad (1)$$

Where Y_i is the number of policy instruments to tackle VAW, x_i is our main regressor that refers to the electoral conservatism indicator aforementioned, and W_i is a set of covariates potentially correlated with our dependent variable. The subscript i indicates that the measures

¹¹The 2018 Survey of Basic Municipal Information does not provide information about the year in which a given municipality adopted each policy instrument, so we account for those in office in the period since the adoption of the national Maria da Penha Law in 2006. This encompasses mayors and city councilors elected between 2004 and 2016.

¹²As before, this encompasses mayors and city councilors elected between 2004 and 2016.

¹³This encompasses city councilors elected between 2004 and 2016. Elected mayors whose ballot names include the title of "pastor" are rare events, so we do not employ this variable.

we include in the model vary across municipalities. We cluster standard errors at the municipal level, so e_i captures unobservable municipal-level characteristics. Appendix A shows the descriptive statistics for all municipal-level variables included in our estimates.

Results

To test H1, we examine whether levels of electoral conservatism impact the adoption of policy instruments to tackle VAW in Brazilian municipalities, as measured by our three dependent variables: *All policies*, *Protection policies*, and *Justice policies*. Table 2 summarizes our results.

In estimating the correlation between constituencies' levels of electoral conservatism and the prevalence of all municipal-level policy instruments when we control only for socio-demographic factors (model 1), we find that conservative ideology is negatively associated with the number of policy instruments adopted in a given municipality. More specifically, a one-point increase on the scale of *electoral conservatism* (where higher values correspond to more conservative preferences) is associated with an average of 0.45 *fewer* policy instruments at the municipal level. In other words, more conservative constituencies tend to adopt fewer policies to tackle VAW. Similarly, models 4 and 7, which delimit the types of policy instruments to those pertaining to protection and justice (respectively), also produce negative and statistically significant coefficients.

Table 2: The effect of electoral conservatism on the number of VAW policy instruments

	(1) All	(2) All	(3) All	(4) Protection	(5) Protection	(6) Protection	(7) Justice	(8) Justice	(9) Justice
Electoral conservatism	-0.451*** (0.0977)	-0.424*** (0.0979)	-0.411*** (0.105)	-0.281*** (0.0620)	-0.269*** (0.0623)	-0.288*** (0.0674)	-0.169*** (0.0572)	-0.155*** (0.0571)	-0.124** (0.0602)
Femicide rate	0.006** (0.002)	0.006** (0.002)	0.005* (0.002)	0.003** (0.001)	0.003** (0.001)	0.002 (0.001)	0.003* (0.001)	0.003* (0.001)	0.002 (0.001)
% Women population	4.077*** (1.072)	3.658*** (1.065)	4.540*** (1.158)	2.626*** (0.628)	2.433*** (0.626)	2.739*** (0.669)	1.451*** (0.558)	1.225** (0.552)	1.801*** (0.597)
% Urban population	-0.070 (0.069)	-0.007 (0.070)	-0.110 (0.072)	-0.0378 (0.042)	-0.008 (0.043)	-0.036 (0.044)	-0.032 (0.040)	0.000 (0.040)	-0.073* (0.041)
% Evangelical population	0.0850 (0.158)	0.0827 (0.158)	-0.0490 (0.160)	-0.0348 (0.094)	-0.0358 (0.094)	-0.0769 (0.096)	0.120 (0.093)	0.119 (0.093)	0.0279 (0.093)
Population size (log)	0.706*** (0.022)	0.721*** (0.023)	0.705*** (0.023)	0.372*** (0.010)	0.379*** (0.010)	0.372*** (0.010)	0.334*** (0.015)	0.342*** (0.015)	0.333*** (0.016)
HDI	3.040*** (0.242)	2.889*** (0.240)	3.056*** (0.253)	1.310*** (0.141)	1.240*** (0.142)	1.278*** (0.148)	1.730*** (0.145)	1.649*** (0.143)	1.778*** (0.152)
Bureaucratic capacity		13.78*** (2.467)			6.357*** (1.454)			7.419*** (1.469)	
% Elected women (Mayor)			0.000 (0.000)			0.000 (0.000)			0.000* (0.000)
% Elected conservative (Mayor)			-0.060 (0.061)			-0.045 (0.037)			-0.014 (0.035)
% Elected women (Council)			0.002 (0.001)			0.001 (0.001)			0.001 (0.001)
% Elected conservative (Council)			0.001 (0.001)			0.001* (0.000)			0.000 (0.000)
% Elected evangelical (Council)			0.050*** (0.018)			0.012 (0.009)			0.038*** (0.011)
R ²	0.438	0.440	0.445	0.381	0.382	0.383	0.325	0.327	0.336
Observations	5540	5540	5252	5540	5540	5252	5540	5540	5252
N.Clusters	5540	5540	5252	5540	5540	5252	5540	5540	5252

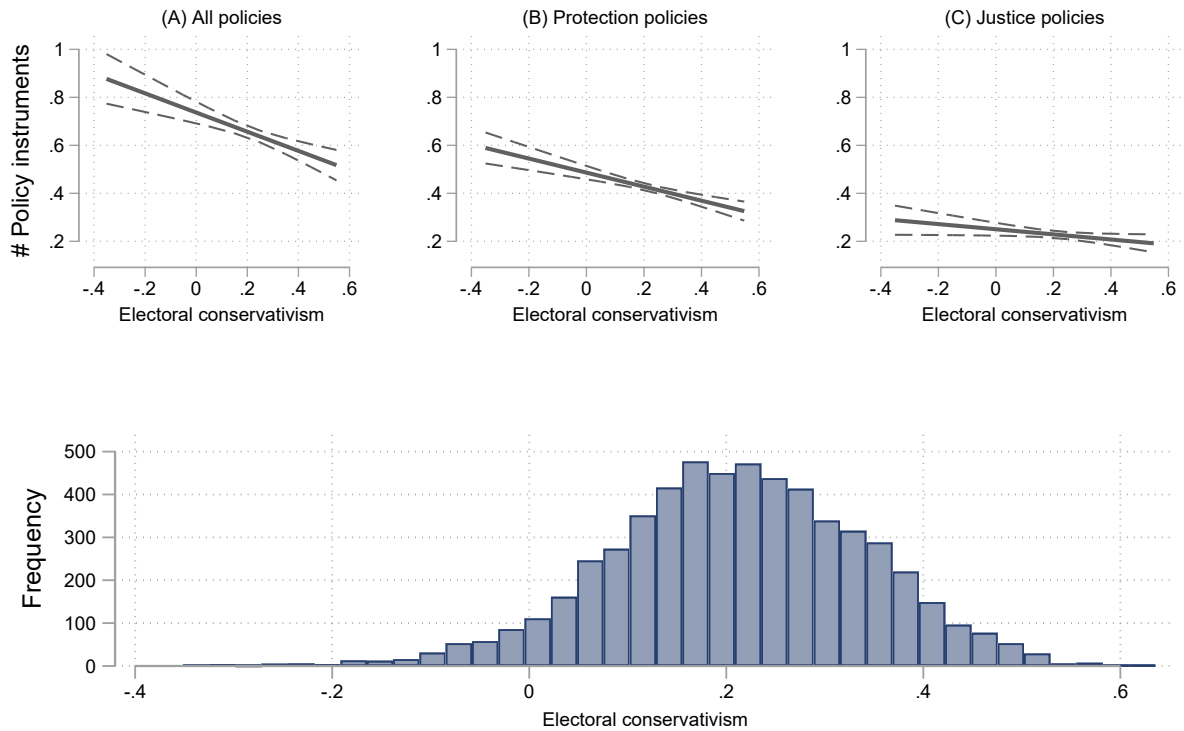
Standard errors in parentheses

* $p < 0.10$, ** $p < 0.05$, *** $p < 0.01$

Note: The unit of analysis is municipality. We run OLS estimates with clustered standard errors at the municipal level.

Figure 2 graphically depicts our estimates for our full models 3, 6, and 9. As shown, the predicted number of policy instruments is higher under lower levels of conservatism even when we control for political factors. Our findings are not driven by a particular type of policy. Nonetheless, as illustrated, the impact of electoral conservatism on policy uptake is stronger in our models of *Protection policies*. This is aligned with previous work that suggests that, although combating VAW may be a non-dogmatic policy area, preferences on *how* to combat VAW diverge (O’Brien and Walsh, 2020; Neumann, 2018).

Figure 2: Predicted number of VAW policy instruments by constituencies’ electoral conservatism



Note: Panels A, B, and C illustrate results from models 3, 6, and 9 reported in Table 2, respectively. The unit of analysis is the municipality. OLS estimates with clustered standard errors at the municipal level.

Importantly, the negative association between electoral conservatism and the adoption of policy instruments persists across all of our estimates, even in baseline models (Appendix B)

and models with controls for socio-economic and political factors potentially associated with policy adoption. Notably, the adoption of policy instruments is not a response to the prevalence of VAW: While *femicide rate* produces statistically significant coefficients across many of our models, the substantive impact of the variable is very small. As anticipated, a higher share of women in the population increases policy uptake—a result that is consistent throughout all models. Population size and levels of human development also increase municipalities’ policy uptake. Although we cannot offer a more direct measure of the impact of women’s movements at the municipal level, these results suggest the role of social pressures previously identified in other studies could also be at play here. Conversely, controls for urban and evangelical populations largely produce statistically insignificant estimates.

In addition, we find that only two of our six controls for different political factors consistently produce statistically significant coefficients. Bureaucratic capacity is strongly and positively associated with policy uptake. This means that municipalities with a more qualified public sector are also more likely to tackle VAW. Surprisingly, the greater presence of evangelical pastors in City Councils *increases* the uptake of policy provisions, a result that seems to be driven by justice provisions. One possible explanation is the Evangelical Caucus’s close alignment to the Bullet Caucus at the national level, and, overall, to a punitive policy agenda (Cowan, 2016)¹⁴. Future studies could explore this relationship more in depth.

In contrast, we find no evidence to suggest that the effect of conservatism on policy instruments is a consequence of a lower presence of women mayors and/or councilors in conservative municipalities, or even of the greater presence of conservative mayors and/or

¹⁴The Maria da Penha Law explicitly prohibits the use of decriminalizing measures that could favor the maintenance of family units, such as reconciliation and mediation (MacDowell Santos, 2010). This protocol has to be applied by all judicial institutions and actors in Brazil, whether or not they are specialised (Pasinato, 2015). Thus, and perhaps unlike other systems, the adoption of judicial instruments in the Brazilian case does not increase the employment of “anti-family” practices.

councilors—as indicated by the lack of statistical significance of these controls in all of our models. These results suggest that *voters'* ideological preferences are more significant in shaping policy uptake than politicians' ideology—a result that resonates with findings from the existing literature that also do not find politicians' ideology to be a predictor of anti-VAW legislation (Htun and Weldon, 2012; Beer, 2017). In other words, conservative electorates seem to be able to curb the adoption of policies to tackle VAW even when politicians are more progressive than the average voter.

Although electoral conservatism negatively impacts the uptake of both types of policy instruments, its impact on protection policies is more pronounced. As anticipated by H1, this suggests that conservative voters have distinct preferences towards anti-VAW policies and that these attitudes are reflected in public policy. Crucially, these instruments include Municipal Councils on Women's Rights, Women's Service Centers, and Women's Shelters—services meant to ensure the immediate safety of women and their dependents, to promote their well-being in the medium and long terms, and to decrease the chances of re-victimization (Tavares et al., 2019; Senado, 2012; Machado et al., 2016).

However, it is also possible that electoral conservatism impacts policy adoption not because of voters' attitudes towards VAW, but because of their preferences for small government. To explore this, we employ data from the 2018 Survey of Basic Municipal Information to derive outcome variables that measure policy uptake in a number of different areas, namely: Employment, income, credit, urban development, and rural development. As shown in Appendix C, electoral conservatism does not seem to impact policy uptake in any of these areas.

In sum, the lower uptake of anti-VAW policy instruments in electorally conservative

municipalities indeed seems to be a product of voters' preferences in this particular policy area. Our findings are aligned with theoretical (and normative) expectations of the functioning of representative democracies—but reinforce concerns about what the growth of conservative ideologies across global democracies may mean for women's rights. To provide further support for our claim that our municipal-level results are a product of elite-mass congruence, in the next section we explore conservative voters' attitudes towards VAW using individual-level data.

Study 2: Individual-level Analysis

As previous research has noted, one of the challenges of studying policy responsiveness is the lack of available metrics of citizens' policy opinions (Lax and Phillips, 2009, 2012). In other words, it could be that conservative voters may not hold preferences that would justify the less frequent adoption of instruments to tackle VAW in conservative constituencies. We address this by conducting a second study to explore individuals' attitudes and policy preferences towards VAW¹⁵.

For our individual-level analyses, we employ data from a nationally representative public opinion survey conducted on 02 and 03 April 2019 by DataFolha with 2,086 Brazilian respondents over 16 years of age¹⁶. The sample includes respondents from 130 municipalities and has a margin of error of 2 percentage points.

To capture individual-level attitudes towards VAW and the need for policies to tackle it, we

¹⁵To be clear, while our data allow for the assessment of public opinion on a specific policy area, they do not allow us to make claims about voters' preferences in specific subnational units (Lax and Phillips, 2012). To means that our individual-level analyses do not directly map onto our municipal-level results.

¹⁶In Brazil, voting is compulsory for citizens between the ages of 18 and 70, and optional from the age of 16 and above 70.

employ respondents' level of agreement with the following three statements:

- "Existing laws in Brazil are adequate to protect women."
- "In the last year, violence against women in Brazil increased."
- "Media exaggerates in their coverage of cases of violence against women."

From the answers to each statement, we produce three outcome variables: *Law*, *Violence*, and *Media*. To code each variable, we transform Likert-scale responses into binary measures, where a value of 1 corresponds to "completely agree" and all other answers take a value of 0. This strategy is advisable because it allows us to differentiate between respondents who have strong attitudes towards VAW and those whose attitudes are less firm, thereby mitigating potential measurement errors caused by social desirability bias (Krumpal, 2013; Tourangeau and Yan, 2007). The variable *Law* has a mean of 0.261, *Violence* has a mean of 0.822, and *Media* has a mean of 0.259. Although we consider this classification as the most conservative, we also run robustness checks using alternative operationalizations.

The survey questionnaire does not contain measures of respondents' conservative tendencies, as traditionally measured by self-placement on a left-right ideological scale. In any case, as previous studies have shown, while left-right ideology scales may be useful to characterize political actors such as parties and legislators, the average respondent cannot reliably place their ideological preferences on such a scale (Ferrer and Velasco, 2013). In the context of Brazil's highly fragmented party systems where the electorate bears weak partisan ties with any single party (Samuels and Zucco, 2018), it is also not possible to use partisanship as a proxy for conservatism¹⁷. To more appropriately capture respondents' adherence to conservatism, we

¹⁷With the exception of the center-left *Partido dos Trabalhadores* (Worker's Party, PT), for which we add a control, as explained below.

derive a measure of revealed conservative attitudes by combining respondents' answers to the following questions and statements:

- “Are you for or against Brazil receiving refugees from Venezuela?”
- “The more people that are incarcerated, the more safe is society.”
- “I am a feminist/support feminism¹⁸.”

To operationalize our measure of conservatism, we transform each question's scale into binary variables, where a value of 1 corresponds to more conservative preferences: Opposition to Venezuelan refugees; agreement that higher incarceration is associated with greater levels of safety; and anti-feminism. We then calculate the sum of individuals' answers to all three questions and derive *conservative (index)*. This measure varies between 0 and 3, where 0 means the absence of conservatism and 3 means the maximum level of conservatism across these three items. This index has a mean of 0.830. We also run our estimates using *conservative (dummy)*, which takes a value of 1 if an individual scores 1 in at least one of our measures of conservatism described above and a value of 0 otherwise.

Since policy preferences may be shaped by other individual-level characteristics, we also include in our estimates controls for respondents' gender (with the variable *woman*), race (with the variable *black*), *age*, *schooling*, *income*, *Evangelical*, *PT voter*¹⁹, and *municipality size*.

Formally, we run logit estimates as described by the following general equation:

$$Y_i = \beta_0 + x_i\beta + W_i + e_i \quad (2)$$

¹⁸In the survey questionnaire, women were asked about whether they identify as feminists, while men were asked if they support feminism. We combine women's and men's answers to create a single variable applicable to all.

¹⁹As many studies have shown, among Brazil's 35 registered parties the PT is the only one that has been able to attain and maintain mass partisanship (Samuels and Zucco, 2018).

Where Y_i captures the attitudes towards VAW at the individual level, X_i is our main regressor that refers to the conservatism index, and w_i is a matrix of covariates that accounts for the characteristics of individuals included in our sample. e_{gi} captures unobservable individual-level characteristics. We run the logit estimates as specified in equation 2 with clustered standard errors at the individual level. Appendix D shows the descriptive statistics for all individual-level variables included in our estimates.

Results

To test H2, we first employ logit models to examine the effect of our measure of revealed conservatism on individuals' attitudes towards VAW. Following our expectations, as shown in Table 3, individuals who score higher values on our measure of conservatism are more likely to agree with the statement that "existing laws in Brazil are adequate to protect women." In other words, conservative voters are less likely than others to see the need for the adoption of new policies to tackle VAW.

Additionally, our results indicate that while conservatives are no different from progressives in their assessment of whether VAW increased (model 2), they are considerably more likely to believe that the "media exaggerates in their coverage of cases of violence against women" (model 3). Figure 3 presents our individual-level results in a more intuitive way. As shown, as conservatism increases (X-axis), so does the predicted probability of agreeing that existing laws in Brazil are sufficiently adequate to protect woman from violence (Panel A), and that media coverage overestimates VAW (Panel C). This is consistent with the literature on policymaking, which argues that the identification of something as an urgency is crucial for their prioritization in the policy agenda (Jones and Baumgartner, 2005). Notably, our estimates are not sensitive

Table 3: The effect of conservatism (index) on attitudes towards VAW

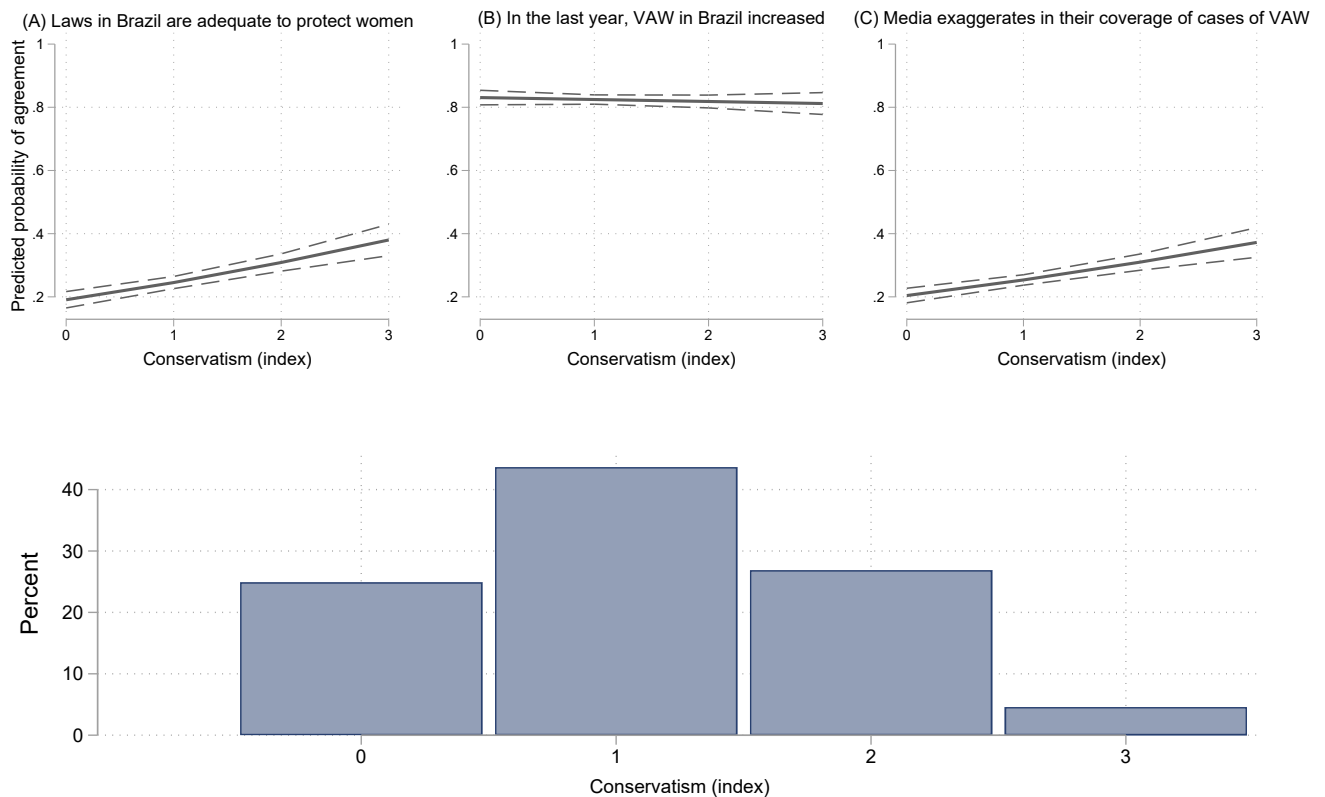
	(1) Law	(2) Violence	(3) Media
Conservatism (index)	0.337*** (0.064)	-0.043 (0.076)	0.288*** (0.064)
Woman	-0.432*** (0.110)	0.500*** (0.125)	-0.544*** (0.107)
Black	0.066 (0.155)	0.326* (0.195)	0.246 (0.150)
Age	0.005* (0.003)	0.000 (0.004)	0.012*** (0.003)
Schooling	-0.212*** (0.034)	0.0696* (0.037)	-0.0226 (0.032)
Income	-0.002 (0.053)	-0.156*** (0.056)	-0.107** (0.051)
Evangelical	0.087 (0.114)	-0.069 (0.128)	0.024 (0.113)
PT voter	0.163 (0.141)	0.226 (0.175)	-0.0656 (0.144)
Municipality size	-0.065* (0.035)	0.145*** (0.038)	-0.072** (0.033)
Pseudo R ²	0.063	0.029	0.036
Wald chi2	129.5685	49.13996	82.5085
Observations	1949	1930	1932
N.Clusters	1949	1930	1932

Standard errors in parentheses

* $p < 0.10$, ** $p < 0.05$, *** $p < 0.01$ **Note:** The unit of analysis is individual respondents. We run logit estimates with clustered standard errors at the individual level.

to alternative operationalizations or model specifications: Our results are robust in baseline models (Appendix E); when we take two alternative approaches to collapsing Likert-scale responses to measure our dependent variables (Appendix F); when we measure conservatism with a binary variable (Appendix G); and when we run our models with municipal-level fixed effects to account for variation in policy frameworks across municipalities where respondents live (Appendix H).

Figure 3: Predicted probability of individuals' agreement with statements concerning VAW, by levels of conservatism



Note: Panels A, B, and C illustrate results from models 1, 2, and 3 reported in Table 3, respectively. The unit of analysis is individual respondent. Logit estimates with clustered standard errors at the individual level.

The statistically significant coefficients produced by our measure of conservatism are not the only ones that stand out: As our results in Table 3 indicate, respondents' gender is also an

important and consistent predictor of attitudes towards VAW. On average, women are more likely than men to believe that existing laws are insufficient to tackle VAW; to agree that there has been an increase in VAW in the last year; and to disagree that the media exaggerates in their coverage of VAW. This is not surprising. Previous work applied to other contexts has also found gender gaps in policy preferences (e.g. Gottlieb et al., 2018), particularly those pertaining to gender equality (e.g. Taylor-Robinson and Heath, 2003). Black respondents are also more likely to agree that VAW increased in the last year. It makes sense that the persistence of VAW is more prominently identified by Black respondents. As previous studies show, VAW in Brazil is racialized and Black women are more likely than white women to be victims of femicide (Ferraz and Schiavon, 2019). In addition, formal educational attainment is also associated with higher levels of agreement that existing laws are insufficient to tackle VAW and that VAW increased in the last year—but has no effect on perceptions of whether the media exaggerates on their coverage of VAW. Finally, our results also indicate that respondents from larger municipalities are more likely to agree that existing laws are insufficient to tackle VAW, that VAW has increased, and that media coverage is not exaggerated.

Overall, the results of our individual-level analyses reinforce our municipal-level findings and suggest that, indeed, the lower prevalence of instruments to combat VAW in more electorally conservative municipalities is a product of conservative voters' lower levels of support for the need for these policies and recognition of VAW as an urgency. These findings indicate that our municipal-level results are not the product of an ecological fallacy: Conservative voters perceive the prevalence of VAW as exaggerated and do not prioritize tackling VAW on the policy agenda.

Conclusion

The relationship between ideology and women's rights has always been an interest to scholars. While in the past, conservative actors may have been more likely to openly display anti-women's rights attitudes and policy preferences, this relationship has become more ambiguous in recent years, as conservative parties and politicians increasingly incorporate women's rights into their agendas (O'Brien, 2018). Notably, the relationship between ideology and the adoption of policies to tackle VAW, a non-dogmatic issue, has been particularly weak. That is, previous work has largely found that governments' dominant ideology does not shape their likelihood of adopting anti-VAW legislation (Htun and Weldon, 2012; Beer, 2017).

Alarmed by the rapid rise of conservative forces around the world, however, concerns about the threat of conservatism on women's rights have been reignited (Kováts, 2018; Biroli and Caminotti, 2020; Payne and de Souza Santos, 2020). In assessing the impact of ideology on women's rights, most existing research has focused on the role of politicians and parties in influencing policy. As of yet, we do not know much about the role of electoral conservatism on policymaking. Nonetheless, as the literature on elite-mass congruence shows, voters can meaningfully influence policy outputs (Lax and Phillips, 2012). This raises the question: Can electoral conservatism make women more vulnerable to violence?

We take a two-step approach to answering this question. First, we examine whether levels of electoral conservatism in the electorate are associated with the adoption of anti-VAW policy instruments. For this, we employ municipal-level data from 5,570 Brazilian municipalities and find, consistently with H1, that municipalities with more conservative electorates adopt fewer policy instruments to tackle VAW. Conservative electorates are particularly detrimental to the adoption of protection instruments, which are key to ascertain the safety of women and

their dependents in the short term, and their well-being in the long term (Tavares et al., 2019; Senado, 2012; Machado et al., 2016). In addition, our analyses suggest that the negative impact of conservative electorates on policy uptake also does not seem to result from conservative voters' attitudes towards government spending, but from their non-prioritization of VAW: Employing survey data from a nationally representative sample of Brazilian respondents to test the association between conservatism and attitudes towards VAW, we find that, as per H2, conservative individuals are indeed less likely to see the need for additional policies to protect women from violence.

Together, the results from our municipal- and individual-level analyses suggest that, as normatively expected by the “pact” of representative democracies, electorates' ideological preferences shape public policy on the ground. When the electorate holds conservative preferences, however, policy congruence may impose costs to women's rights. These findings raise a number of questions for further research.

First, while we find electoral conservatism to be a key factor explaining policy adoption, it is unlikely that individual voters' preferences all have the same weight in influencing public policy; as such, future work may want to further inquire about *whose conservatisms* are politicians most responsive to. Second, evangelical voters and political figures are increasingly gaining influence in Latin America and beyond. Their attitudes towards VAW and role in shaping anti-VAW policy deserve further attention. More broadly, our findings contribute to ongoing debates about the potential impact of the rise of conservatism on women's rights around the world. Similarly to Brazil, other countries—including Argentina, France, Germany, India, Mexico, Poland, Switzerland, and the United States—also provide contexts where local governments can have high levels of discretion over policymaking (Ladner et al., 2016) and

where the rise of conservatism in the electorate could translate into heterogeneous subnational protections for women.

References

- Adams, J., Clark, M., Ezrow, L., and Glasgow, G. (2004). Understanding change and stability in party ideologies: Do parties respond to public opinion or to past election results? *British Journal of Political Science*, 34(4):589–610.
- Adsera, A., Boix, C., and Payne, M. (2003). Are you being served? Political accountability and quality of government. *The Journal of Law, Economics, and Organization*, 19(2):445–490.
- Akkerman, T. (2015). Gender and the radical right in western europe: A comparative analysis of policy agendas. *Patterns of Prejudice*, 49(1-2):37–60.
- Baldez, L. (2011). The UN convention to eliminate all forms of discrimination against women (cedaw): A new way to measure women’s interests. *Politics & Gender*, 7(3):419–423.
- Beckwith, K. (2000). Beyond compare? Women’s movements in comparative perspective. *European Journal of Political Research*, 37(4):431–468.
- Beckwith, K. and Cowell-Meyers, K. (2007). Sheer numbers: Critical representation thresholds and women’s political representation. *Perspectives on Politics*, 5(3):553–565.
- Beer, C. (2017). Left parties and violence against women legislation in Mexico. *Social Politics: International Studies in Gender, State & Society*, 24(4):511–537.
- Beer, C. (2019). Multilevel causation in gender policy: Abortion and violence against women laws in the mexican states. In Giraudy, A., Moncada, E., and Snyder, R., editors, *Inside Countries: Subnational Research in Comparative Politics*. Cambridge University Press.
- Bentancur, V. P. and Rocha-Carpiuc, C. (2020). The postreform stage: Understanding backlash against sexual policies in latin america. *Politics & Gender*, 16(1).
- Bernardi, L., Bischof, D., and Wouters, R. (2020). The public, the protester, and the bill: Do legislative agendas respond to public opinion signals? *Journal of European Public Policy*, pages 1–22.
- Biroli, F. and Caminotti, M. (2020). The conservative backlash against gender in latin america. *Politics & Gender*, 16(1).

- Blofield, M., Ewig, C., and Piscopo, J. M. (2017). The reactive left: Gender equality and the Latin American pink tide. *Social Politics*, 24(4):345–369.
- Boas, T. C. (2014). Pastor Paulo vs. Doctor Carlos: Professional titles as voting heuristics in Brazil. *Journal of Politics in Latin America*, 6(2):39–72.
- Bryson, V. and Heppell, T. (2010). Conservatism and feminism: The case of the British conservative party. *Journal of Political Ideologies*, 15(1):31–50.
- Caul, M. (2001). Political parties and the adoption of candidate gender quotas: A cross-national analysis. *Journal of Politics*, 63(4):1214–1229.
- Celis, K. and Childs, S. (2012). The substantive representation of women: What to do with conservative claims? *Political Studies*, 60(1):213–225.
- Celis, K. and Childs, S. (2018). Conservatism and women’s political representation. *Politics & Gender*, 14(1):5–26.
- Celis, K. and Erzeel, S. (2015). Beyond the usual suspects: Non-left, male and non-feminist MPs and the substantive representation of women. *Government and Opposition*, 50(1):45–64.
- Cerqueira, D. R. d. C., Bueno, S., Lima, R. S. d., Neme, C., Helder, F., Paloma Palmieri, A., David, M., Reis, M., Cypriano, O., Sobral, I., et al. (2019). Atlas da violência 2019. Technical report, Instituto de Pesquisa Econômica Aplicada (IPEA).
- Childs, S., Webb, P., and Marthaler, S. (2010). Constituting and substantively representing women: Applying new approaches to a UK case study. *Politics & Gender*, 6(2):199–223.
- Córdova, A. and Kras, H. (2020). Addressing violence against women: The effect of women’s police stations on police legitimacy. *Comparative Political Studies*, 53(5):775–808.
- Cowan, B. A. (2016). Holy ghosts of Brazil’s past: The reactionary “bullets, beef, and bibles” caucus in Brazil’s national legislature reveals what is new, and not-so-new, about Brazil’s new right. *NACLA Report on the Americas*, 48(4):346–352.
- Dahl, R. A. (1989). *Democracy and its Critics*. Yale University Press.

- Deus, A. and Gonzalez, D. (2019). Analysis of femicide/feminicide legislation in Latin America and the Caribbean and a proposal for a model law. Technical report, UN Women.
- Erikson, R. S., Wright, G. C., Wright, G. C., and McIver, J. P. (1993). *Statehouse democracy: Public opinion and policy in the American states*. Cambridge University Press.
- Ezrow, L., De Vries, C., Steenbergen, M., and Edwards, E. (2011). Mean voter representation and partisan constituency representation: Do parties respond to the mean voter position or to their supporters? *Party Politics*, 17(3):275–301.
- Ferraz, C. and Schiavon, L. (2019). Breaking the cycle: The impact of legal reforms on domestic violence. *Working Paper*.
- Ferrer, L. E. G. and Velasco, R. Q. (2013). Izquierda y derecha: Formas de definirlas, el caso latinoamericano y sus implicaciones. *América Latina Hoy*, 65:79–105.
- Fisman, R. and Gatti, R. (2002). Decentralization and corruption: evidence across countries. *Journal of public economics*, 83(3):325–345.
- Fording, R. C., Soss, J., and Schram, S. F. (2007). Devolution, discretion, and the effect of local political values on tanf sanctioning. *Social Service Review*, 81(2):285–316.
- Franceschet, S. (2010). Explaining domestic violence policy outcomes in Chile and Argentina. *Latin American Politics and Society*, 52(3):1–29.
- Franceschet, S. and Piscopo, J. M. (2013). Federalism, decentralization, and reproductive rights in argentina and chile. *Publius: The Journal of Federalism*, 43(1):129–150.
- Friedman, E. J. (2009). Regionalizing women’s human rights in latin america. *Politics & Gender*, 5(3):349–375.
- Funk, K. D., Hinojosa, M., and Piscopo, J. M. (2017). Still left behind: gender, political parties, and Latin America’s pink tide. *Social Politics: International Studies in Gender, State & Society*, 24(4):399–424.
- Funk, K. D. and Philips, A. Q. (2019). Representative budgeting: Women mayors and the composition of spending in local governments. *Political Research Quarterly*, 72(1):19–33.

- García-Moreno, C., Pallitto, C., Devries, K., Stöckl, H., Watts, C., and Abrahams, N. (2013). *Global and regional estimates of violence against women: Prevalence and health effects of intimate partner violence and non-partner sexual violence*. World Health Organization.
- Gottlieb, J., Grossman, G., and Robinson, A. L. (2018). Do men and women have different policy preferences in africa? Determinants and implications of gender gaps in policy prioritization. *British Journal of Political Science*, 48(3):611–636.
- Hager, A. and Hilbig, H. (2020). Does public opinion affect political speech? *American Journal of Political Science*, 64(4):921–937.
- Hayes, C. (2007). Tackling violence against women: A worldwide approach. In Terry, G. and Hoare, J., editors, *Gender-based Violence*. Oxfam.
- Htun, M. and Piscopo, J. (2014). Women in politics and policy in Latin America and the Caribbean. In *Conflict Prevention and Peace Forum CPPF Working Papers on Women in Politics*, volume 2.
- Htun, M. and Weldon, S. L. (2010). When do governments promote women’s rights? A framework for the comparative analysis of sex equality policy. *Perspectives on Politics*, 8(1):207–216.
- Htun, M. and Weldon, S. L. (2011). State power, religion, and women’s rights: A comparative analysis of family law. *Indiana Journal of Global Legal Studies*, 18(1):145–165.
- Htun, M. and Weldon, S. L. (2012). The civic origins of progressive policy change: Combating violence against women in global perspective, 1975–2005. *American Political Science Review*, 106(3):548–569.
- Huber, J. D. and Powell, G. B. (1994). Congruence between citizens and policymakers in two visions of liberal democracy. *World Politics*, 46(3):291–326.
- Hughes, C., Marrs, C., and Sweetman, C. (2016). Introduction to gender, development and VAWG. *Gender & Development*, 24(2):124–169.
- Inglehart, R. and Norris, P. (2003). *Rising tide: Gender equality and cultural change around the world*. Cambridge University Press.

- Jones, B. D. and Baumgartner, F. R. (2005). *The politics of attention: How government prioritizes problems*. University of Chicago Press.
- Kováts, E. (2018). Questioning consensuses: Right-wing populism, anti-populism, and the threat of 'gender ideology'. *Sociological Research Online*, 23(2):528–538.
- Krumpal, I. (2013). Determinants of social desirability bias in sensitive surveys: A literature review. *Quality & Quantity*, 47(4):2025–2047.
- Ladner, A., Keuffer, N., and Baldersheim, H. (2016). Measuring local autonomy in 39 countries (1990–2014). *Regional & Federal Studies*, 26(3):321–357.
- Lagarde, M. (2006). *Feminicidio: una perspectiva global*, volume 7. UNAM.
- Lax, J. R. and Phillips, J. H. (2009). Gay rights in the states: Public opinion and policy responsiveness. *American Political Science Review*, 103(3):367–386.
- Lax, J. R. and Phillips, J. H. (2012). The democratic deficit in the states. *American Journal of Political Science*, 56(1):148–166.
- Lodders, V. and Weldon, S. (2019). Why do women vote radical right? Benevolent sexism, representation and inclusion in four countries. *Representation*, 55(4):457–474.
- Luna, J. P. and Kaltwasser, C. R. (2014). *The resilience of the Latin American right*. JHU Press.
- Luna, J. P. and Zechmeister, E. J. (2005). Political representation in latin america: A study of elite-mass congruence in nine countries. *Comparative Political Studies*, 38(4):388–416.
- Macaulay, F. (2000). Tackling violence against women in Brazil: Converting international principles into effective local policy. In Jacobs, D. S., Jacobsen, R., and Marchbank, J., editors, *States of Conflict: Gender, Violence and Resistance*. Palgrave Macmillan.
- Macaulay, F. (2010). Trickling up, down, and sideways: Gender policy and political opportunity in Brazil. In Lebon, N. and Maier, E., editors, *Women's Activism in Latin America and the Caribbean: Engendering Social Justice, Democratizing Citizenship*. Rutgers University Press.

- MacDowell Santos, C. (2010). Da delegacia da mulher à Lei Maria da Penha: Absorção/tradução de demandas feministas pelo estado. *Revista crítica de ciências sociais*, (89):153–170.
- Machado, I. V., Lopes, A. G., Venâncio, K. E. A., de Mattos Lessa, L., de Lima, M. A. P., and Costa, M. F. (2016). Lei Maria da Penha: A importância das políticas públicas de abrigamento no contexto do enfrentamento às violências contra as mulheres. *Revista Direitos Humanos e Democracia*, 4(7):172–199.
- Machado, M. d. D. C. et al. (2018). Religion and moral conservatism in Brazilian politics. *Politics and Religion Journal*, 12(1):55–74.
- Mazur, A. G. (2002). *Theorizing feminist policy*. Oxford University Press.
- Medie, P. A. and Walsh, S. D. (2019). International organizations, nongovernmental organizations, and police implementation of domestic violence policies in Liberia and Nicaragua. *Politics & Gender*, pages 1–31.
- Meier, K. J. and Funk, K. D. (2017). Women and public administration in a comparative perspective: The case of representation in Brazilian local governments. *Administration & Society*, 49(1):121–142.
- Neumann, P. J. (2018). Transnational governance, local politics, and gender violence law in Nicaragua. *Latin American Politics and Society*, 60(2):61–82.
- O’Brien, C. and Walsh, S. D. (2020). Women’s rights and opposition: Explaining the stunted rise and sudden reversals of progressive violence against women policies in contentious contexts. *Journal of Latin American Studies*, 52(1):107–131.
- O’Brien, D. Z. (2018). “Righting” conventional wisdom: Women and right parties in established democracies. *Politics & Gender*, 14(1):27–55.
- Page, B. I. and Shapiro, R. Y. (1983). Effects of public opinion on policy. *The American political science review*, pages 175–190.

- Pasinato, W. (2015). Acesso à justiça e violência doméstica e familiar contra as mulheres: As percepções dos operadores jurídicos e os limites para a aplicação da Lei Maria da Penha. *Revista Direito GV*, 11(2):407–428.
- Pasinato, W., Santos, and MacDowell Santos, C. (2008). Mapeamento das delegacias da mulher no Brasil. *São Paulo: PAGU, UNICAMP*.
- Payne, L. A. and de Souza Santos, A. A. (2020). The right-wing backlash in Brazil and beyond. *Politics & Gender*, 16(1).
- Peres, U. D., Bueno, S., da Silva Leite, C. K., and de Lima, R. S. (2014). Segurança pública: Reflexões sobre o financiamento de suas políticas públicas no contexto federativo brasileiro. *Revista Brasileira de Segurança Pública*, 8(1).
- Powell Jr, G. B. (2004). Political representation in comparative politics. *Annual Review of Political Science*, 7:273–296.
- Power, T. J. and Rodrigues-Silveira, R. (2019). Mapping ideological preferences in Brazilian elections, 1994-2018: A municipal-level study. *Brazilian Political Science Review*, 13(1).
- Power, T. J. and Zucco Jr, C. (2012). Elite preferences in a consolidating democracy: The Brazilian legislative surveys, 1990–2009. *Latin American Politics and Society*, 54(4):1–27.
- Przeworski, A., Stokes, S. C. S., Stokes, S. C., and Manin, B. (1999). *Democracy, accountability, and representation*, volume 2. Cambridge University Press.
- Russell, D. E. and Harmes, R. A. (2001). *Femicide in global perspective*. Teachers College Press.
- Samuels, D. J. and Zucco, C. (2018). *Partisans, antipartisans, and nonpartisans: Voting behavior in Brazil*. Cambridge University Press.
- Schwindt-Bayer, L. A. (2010). *Political power and women's representation in Latin America*. Oxford University Press.
- Senado (2012). Boletim mulheres e seus temas emergentes. Technical report, Instituto de Pesquisa do Senado.

- Souza, C. (2016). *Constitutional engineering in Brazil: The politics of federalism and decentralization*. Springer.
- Steunenberg, B. (1996). Agent discretion, regulatory policymaking, and different institutional arrangements. *Public Choice*, 86(3-4):309–339.
- Tavares, P., Sangostino Recavarren, I., and Sinha, A. (2019). *Protecting Women from Violence: Bridging the Implementation Gap Between Law and Practice*. World Bank Research and Development Center.
- Taylor-Robinson, M. M. and Heath, R. M. (2003). Do women legislators have different policy priorities than their male colleagues? A critical case test. *Women & Politics*, 24(4):77–101.
- Tourangeau, R. and Yan, T. (2007). Sensitive questions in surveys. *Psychological Bulletin*, 133(5):859.
- Uitermark, J., Nicholls, W., and Loopmans, M. (2012). Cities and social movements: theorizing beyond the right to the city.
- Vaggione, J. M. and Machado, M. D. D. C. (2020). Religious patterns of neoconservatism in latin america. *Politics & Gender*, 16(1).
- Waiselfisz, J. J. (2015). *Mapa da violência 2015: Homicídio de mulheres no Brasil*. Flacso Brasil.
- Weldon, L. et al. (2011). *When protest makes policy: How social movements represent disadvantaged groups*. University of Michigan Press.
- Weldon, S. L. (2002a). Beyond bodies: Institutional sources of representation for women in democratic policymaking. *The Journal of Politics*, 64(4):1153–1174.
- Weldon, S. L. (2002b). *Protest, policy, and the problem of violence against women: A cross-national comparison*. University of Pittsburgh Press.
- World Bank, T. (2020). Women, business and the law 2020.

Can conservatism make women more vulnerable to violence?

Appendix

Victor Araújo* Malu A. C. Gatto[†]

*University of Zurich. Email: victor.araujo@pw.uzh.ch.

[†]University College London. Email: m.gatto@ucl.ac.uk.

Contents

A	Municipal analysis: Descriptive statistics	3
B	Municipal analysis: Baseline results (model without controls)	4
C	Municipal analysis: Other outcome variables (different policy areas)	5
D	Individual analysis: Descriptive statistics	6
E	Individual analysis: Baseline results (models without controls)	7
F	Individual analysis: Alternative measures of outcome variables	8
G	Individual analysis: Alternative measure of conservatism	12
H	Individual analysis: Models with fixed effects at the municipal level	13

A Municipal analysis: Descriptive statistics

Table 1: Descriptive statistics

Variable	Obs	Mean	Std.Dev.	Min	Max
Dependent variables					
All policies	5,569	0.657	1.374	0	10
Protection policies	5,569	0.426	0.768	0	4
Justice policies	5,569	0.230	0.763	0	6
Main regressor					
Electoral conservatism (2016)	5,554	0.211	0.131	-0.351	0.635
Sociodemographic Controls					
Femicide rate	5,556	3.745	4.802	0	54.40
% Women Population	5,565	49.50	1.562	18.90	54.24
% Urban population	5,565	63.82	22.04	4.172	100
% Evangelical population	5,564	14.54	8.541	0	78.69
Population size (log)	5,565	9.392	1.150	6.690	16.22
HDI	5,565	.6591	.07199	.418	.862
Bureaucratic capacity	5,565	0.451	00.51	0	4.182
Political Controls					
% Elected women (Mayor)	5,545	9.684	17.96	0	100
% Elected conservative (Mayor)	5,309	18.95	26.98	0	100
% Elected women (Council)	5,436	13.12	7.777	0	60.10
% Elected conservative (Council)	5,436	21.12	11.71	0	88.88
% Elected evangelical (Council)	5,436	.2750	1.073	0	11.11

Source: Data from IBGE/MUNIC (2018); Power and Rodrigues (2019); and Superior Electoral Court (2018). The unit of analysis is municipality.

B Municipal analysis: Baseline results (model without controls)

Table 2: The effect of electoral conservatism on the number of VAW policy instruments

	(1) All	(2) Protection	(3) Justice
Electoral conservatism	-1.647*** (0.131)	-0.951*** (0.0732)	-0.697*** (0.0736)
Constant	1.001*** (0.0398)	0.625*** (0.0213)	0.375*** (0.0226)
R ²	0.025	0.026	0.014
Observations	5549	5549	5549
N.Clusters	5549	5549	5549

Standard errors in parentheses

* $p < 0.10$, ** $p < 0.05$, *** $p < 0.01$

Note: The unit of analysis is municipality. We run OLS estimates with clustered standard errors at the municipal level.

C Municipal analysis: Other outcome variables (different policy areas)

Table 3: The effect of electoral conservatism on the probability of policy adoption at the municipal level (2018)

Policies for promotion of:	(1) Employment	(2) Income	(3) Credit	(4) Urban develop.	(5) Rural develop.
Electoral conservatism	0.158 (0.247)	-0.246 (0.245)	0.0974 (0.263)	-0.185 (0.246)	-0.197 (0.270)
Femicide rate	0.00126 (0.00608)	-0.00426 (0.00596)	0.00117 (0.00632)	0.00709 (0.00606)	0.00120 (0.00643)
% Women population	2.905 (2.290)	2.033 (2.189)	-0.492 (2.232)	4.437** (2.240)	4.714** (2.257)
% Urban population	-0.255 (0.180)	-0.729*** (0.180)	0.444** (0.192)	-0.140 (0.187)	-1.249*** (0.197)
% Evangelical population	0.0319 (0.363)	0.172 (0.363)	0.743** (0.356)	-0.431 (0.377)	-0.318 (0.380)
Population size (log)	0.445*** (0.0335)	0.516*** (0.0332)	0.322*** (0.0332)	0.471*** (0.0330)	0.102*** (0.0330)
HDI	3.841*** (0.520)	1.485*** (0.516)	0.507 (0.533)	1.998*** (0.531)	-1.612*** (0.550)
% Elected women (Mayor)	0.00250 (0.00164)	-0.000811 (0.00162)	0.00377** (0.00171)	-0.000255 (0.00166)	-0.000801 (0.00171)
% Elected conservative (Mayor)	0.136 (0.130)	0.0383 (0.128)	-0.265* (0.139)	0.00518 (0.130)	0.123 (0.140)
% Elected women (Council)	0.00228 (0.00381)	0.00896** (0.00377)	0.000150 (0.00401)	0.00355 (0.00387)	0.00237 (0.00412)
% Elected conservative (Council)	-0.00783** (0.00311)	-0.00698** (0.00307)	-0.00612* (0.00338)	-0.00606* (0.00315)	0.00219 (0.00333)
% Elected evangelical (Council)	0.0290 (0.0306)	0.0182 (0.0299)	-0.0496* (0.0288)	0.0552* (0.0296)	0.00674 (0.0290)
Pseudo R ²	0.054	0.054	0.037	0.062	0.018
Wald chi2	333.0121	343.6452	238.0061	376.2394	105.1022
Observations	5253	5253	5253	5253	5253
N.Clusters	5253	5253	5253	5253	5253

Standard errors in parentheses

* $p < 0.10$, ** $p < 0.05$, *** $p < 0.01$

Note: The unit of analysis is municipality. We run logit estimates with clustered standard errors at the municipal level.

D Individual analysis: Descriptive statistics

Table 4: Descriptive statistics

Variable	Obs	Mean	Std.Dev.	Min	Max
Dependent variables					
Law	2,066	0.261	0.439	0	1
Violence	2,051	0.822	0.383	0	1
Media	2,037	0.259	0.438	0	1
DV: Alternative classifications					
Law (1)	2,066	0.426	0.495	0	1
Violence (1)	2,051	0.920	0.272	0	1
Media (1)	2,037	0.415	0.493	0	1
Law (2)	2,066	.4317	.4954	0	1
Violence (2)	2,051	.9210	.2697	0	1
Media (2)	2,037	0.417	0.493	0	1
Measures of conservatism					
Conservatism (index)	2,032	1.111	0.830	0	3
Conservatism (dummy)	2,086	0.750	0.433	0	1
Rejects feminism	2,086	0.550	0.498	0	1
Rejects refugees	2,086	0.178	0.382	0	1
Accepts incarceration	2,032	0.386	0.487	0	1
Controls					
Woman	2,086	0.525	0.499	0	1
Black	2,086	0.140	0.348	0	1
Age	2,086	41.48	16.61	16	91
Schooling	2,086	4.221	1.958	1	8
Income	2,006	2.065	1.167	1	7
Evangelical	2,086	.3365	.4726	0	1
PT voter	2,086	0.167	0.373	0	1
Municipality size	2,086	3.201	1.618	1	5

Source: DataFolha, 2019. The unit of analysis is individual respondents.

E Individual analysis: Baseline results (models without controls)

Table 5: The effect of conservatism (index) on attitudes towards VAW

	(1) Law	(2) Violence	(3) Media
Conservatism (index)	0.382*** (0.0600)	-0.0670 (0.0713)	0.294*** (0.0609)
Constant	-1.490*** (0.0890)	1.610*** (0.101)	-1.382*** (0.0892)
Pseudo R ²	0.017	0.000	0.010
Wald chi2	40.551	.8819	23.335
Observations	2022	2002	2002
N.Clusters	2022	2002	2002

Standard errors in parentheses

* $p < 0.10$, ** $p < 0.05$, *** $p < 0.01$

Note: The unit of analysis is individual respondents. We run logit estimates with clustered standard errors at the individual level.

Table 6: The effect of conservatism (dummy) on attitudes towards VAW

	(1) Law	(2) Violence	(3) Media
Conservatism (dummy)	0.735*** (0.131)	-0.0735 (0.136)	0.528*** (0.127)
Constant	-1.614*** (0.118)	1.586*** (0.118)	-1.459*** (0.113)
Pseudo R ²	0.015	0.000	0.008
Wald chi2	31.61568	.2937394	17.35151
Observations	2066	2051	2037
N.Clusters	2066	2051	2037

Standard errors in parentheses

* $p < 0.10$, ** $p < 0.05$, *** $p < 0.01$

Note: The unit of analysis is individual respondents. We run logit estimates with clustered standard errors at the individual level.

F Individual analysis: Alternative measures of outcome variables

Table 7: The effect of conservatism (index) on attitudes towards VAW - 1st alternative classification of DVs

	(1) Law	(2) Violence	(3) Media
Conservatism (index)	0.131** (0.0577)	-0.160 (0.109)	0.236*** (0.0580)
Woman	-0.402*** (0.0967)	0.410** (0.175)	-0.390*** (0.0958)
Black	-0.146 (0.139)	0.186 (0.270)	-0.0292 (0.137)
Age	0.00530* (0.00307)	-0.00573 (0.00548)	0.0167*** (0.00309)
Schooling	-0.180*** (0.0294)	0.0790 (0.0537)	-0.0248 (0.0287)
Income	0.00756 (0.0470)	-0.151* (0.0802)	-0.0819* (0.0448)
Evangelical	0.0934 (0.101)	-0.0561 (0.180)	-0.0332 (0.102)
PT voter	0.196 (0.125)	0.266 (0.249)	-0.0782 (0.127)
Municipality size	-0.105*** (0.0304)	0.124** (0.0534)	-0.0550* (0.0301)
Constant	0.559** (0.228)	2.257*** (0.411)	-0.621*** (0.231)
Pseudo R ²	0.047	0.025	0.033
Wald chi2	113.90	25.528	83.045
Observations	1949	1930	1932
N.Clusters	1949	1930	1932

Standard errors in parentheses

* $p < 0.10$, ** $p < 0.05$, *** $p < 0.01$

Note: The unit of analysis is individual respondents. We run logit estimates with clustered standard errors at the individual level. In these models we make the classification of our dependent variables less restrictive by grouping the categories "Totally agree" and "Partially agree" instead of only taking into account "Totally agree" in the reference category (1).

Table 8: The effect of conservatism (dummy) on attitudes towards VAW - 1st alternative classification of DVs

	(1) Law	(2) Violence	(3) Media
Conservatism (dummy)	0.259** (0.113)	-0.0851 (0.207)	0.414*** (0.113)
Woman	-0.400*** (0.0958)	0.443** (0.172)	-0.371*** (0.0949)
Black	-0.148 (0.137)	0.258 (0.269)	-0.0421 (0.135)
Age	0.00531* (0.00303)	-0.00687 (0.00534)	0.0156*** (0.00305)
Schooling	-0.181*** (0.0292)	0.0893* (0.0531)	-0.0270 (0.0286)
Income	0.00182 (0.0468)	-0.137* (0.0801)	-0.0634 (0.0448)
Evangelical	0.0976 (0.0997)	-0.116 (0.177)	-0.0536 (0.100)
PT voter	0.184 (0.125)	0.288 (0.249)	-0.0623 (0.126)
Municipality size	-0.108*** (0.0302)	0.123** (0.0528)	-0.0561* (0.0299)
Constant	0.536** (0.235)	2.111*** (0.412)	-0.657*** (0.239)
Pseudo R ²	0.049	0.025	0.029
Wald chi2	120.5001	26.69381	75.85838
Observations	1988	1974	1965
N.Clusters	1988	1974	1965

Standard errors in parentheses

* $p < 0.10$, ** $p < 0.05$, *** $p < 0.01$

Note: The unit of analysis is individual respondents. We run logit estimates with clustered standard errors at the individual level. In these models we make the classification of our dependent variables less restrictive by grouping the categories "Totally agree" and "Partially agree" instead of only taking into account "Totally agree" in the reference category (1).

Table 9: The effect of conservatism (index) on attitudes towards VAW - 2nd alternative classification of DVs

	(1) Law	(2) Violence	(3) Media
Conservatism (index)	0.136** (0.0577)	-0.176 (0.110)	0.225*** (0.0579)
Woman	-0.390*** (0.0967)	0.407** (0.177)	-0.403*** (0.0958)
Black	-0.170 (0.140)	0.156 (0.271)	-0.0421 (0.137)
Age	0.00486 (0.00307)	-0.00627 (0.00552)	0.0172*** (0.00310)
Schooling	-0.184*** (0.0293)	0.0761 (0.0547)	-0.0265 (0.0287)
Income	0.00701 (0.0470)	-0.147* (0.0816)	-0.0800* (0.0448)
Evangelical	0.0799 (0.101)	-0.0884 (0.181)	-0.0171 (0.101)
PT voter	0.201 (0.125)	0.301 (0.255)	-0.0743 (0.127)
Municipality size	-0.104*** (0.0303)	0.125** (0.0539)	-0.0576* (0.0301)
Constant	0.610*** (0.228)	2.334*** (0.416)	-0.603*** (0.230)
Pseudo R ²	0.048	0.025	0.033
Wald chi2	115.9537	24.85774	85.0206
Observations	1949	1930	1932
N.Clusters	1949	1930	1932

Standard errors in parentheses

* $p < 0.10$, ** $p < 0.05$, *** $p < 0.01$

Note: The unit of analysis is individual respondents. We run logit estimates with clustered standard errors at the individual level. In these models we make the classification of our dependent variables less restrictive by grouping the categories "Totally agree", "Partially agree", and "Neither agree nor disagree" instead of only taking into account "Totally agree" in the reference category (1).

Table 10: The effect of conservatism (dummy) on attitudes towards VAW - 2nd alternative classification of DVs

	(1) Law	(2) Violence	(3) Media
Conservatism (dummy)	0.263** (0.113)	-0.0955 (0.210)	0.388*** (0.113)
Woman	-0.388*** (0.0958)	0.439** (0.174)	-0.383*** (0.0949)
Black	-0.178 (0.137)	0.231 (0.269)	-0.0545 (0.135)
Age	0.00488 (0.00303)	-0.00742 (0.00538)	0.0160*** (0.00306)
Schooling	-0.186*** (0.0292)	0.0871 (0.0540)	-0.0287 (0.0286)
Income	0.00123 (0.0469)	-0.134 (0.0815)	-0.0618 (0.0448)
Evangelical	0.0881 (0.0996)	-0.149 (0.178)	-0.0378 (0.100)
PT voter	0.200 (0.125)	0.324 (0.254)	-0.0581 (0.126)
Municipality size	-0.109*** (0.0301)	0.124** (0.0533)	-0.0588** (0.0299)
Constant	0.603** (0.235)	2.175*** (0.415)	-0.630*** (0.238)
Pseudo R ²	0.050	0.025	0.030
Wald chi2	124.1088	25.79522	77.50722
Observations	1988	1974	1965
N.Clusters	1988	1974	1965

Standard errors in parentheses

* $p < 0.10$, ** $p < 0.05$, *** $p < 0.01$

Note: The unit of analysis is individual respondents. We run logit estimates with clustered standard errors at the individual level. In these models we make the classification of our dependent variables less restrictive by grouping the categories "Totally agree", "Partially agree", and "Neither agree nor disagree" instead of only taking into account "Totally agree" in the reference category (1).

G Individual analysis: Alternative measure of conservatism

Table 11: The effect of conservatism (dummy) on attitudes towards VAW

	(1) Law	(2) Violence	(3) Media
Conservatism (dummy)	0.606*** (0.139)	-0.00713 (0.146)	0.487*** (0.132)
Woman	-0.421*** (0.109)	0.516*** (0.123)	-0.534*** (0.106)
Black	0.0592 (0.152)	0.393** (0.193)	0.226 (0.148)
Age	0.00595* (0.00349)	-0.000381 (0.00397)	0.0118*** (0.00340)
Schooling	-0.213*** (0.0339)	0.0784** (0.0373)	-0.0235 (0.0323)
Income	-0.00621 (0.0538)	-0.145*** (0.0560)	-0.0921* (0.0515)
Evangelical	0.116 (0.112)	-0.100 (0.126)	0.0285 (0.112)
PT voter	0.125 (0.141)	0.192 (0.172)	-0.0559 (0.143)
Municipality size	-0.0688** (0.0349)	0.144*** (0.0376)	-0.0695** (0.0334)
Constant	-0.559** (0.273)	0.803*** (0.307)	-1.183*** (0.275)
Pseudo R ²	0.061	0.030	0.031
Wald chi2	128.5498	52.21776	74.49625
Observations	1988	1974	1965
N.Clusters	1988	1974	1965

Standard errors in parentheses

* $p < 0.10$, ** $p < 0.05$, *** $p < 0.01$

Note: The unit of analysis is individual respondents. We run logit estimates with clustered standard errors at the individual level.

H Individual analysis: Models with fixed effects at the municipal level

Table 12: The effect of conservatism (index) on attitudes towards VAW - with municipal-level fixed effects

	(1) Law	(2) Violence	(3) Media
Conservatism (index)	0.301*** (0.070)	-0.0134 (0.077)	0.275*** (0.068)
Woman	-0.437*** (0.114)	0.532*** (0.126)	-0.548*** (0.110)
Black	-0.0840 (0.171)	0.330 (0.204)	0.295* (0.163)
Age	0.00623* (0.00368)	-0.000326 (0.00400)	0.0121*** (0.00355)
Schooling	-0.241*** (0.0357)	0.0662* (0.0383)	-0.0473 (0.0337)
Income	0.0484 (0.0578)	-0.139** (0.0620)	-0.107* (0.0559)
Evangelical	0.0478 (0.124)	-0.0843 (0.139)	-0.0431 (0.120)
PT voter	0.0309 (0.150)	0.368** (0.180)	-0.106 (0.149)
Pseudo R ²	0.069	0.028	0.041
Wald chi2	112.78	36.567	70.103
Observations	1894	1777	1880
N.Clusters	126	118	126

Standard errors in parentheses

* $p < 0.10$, ** $p < 0.05$, *** $p < 0.01$

Note: The unit of analysis is individual respondents. We run logit estimates with municipal-level fixed effects to account for unobservable characteristics at the municipal level that can affect individuals' attitudes towards VAW.

Table 13: The effect of conservatism (dummy) on attitudes towards VAW - with municipal-level fixed effects

	(1) Law	(2) Violence	(3) Media
Conservatism (dummy)	0.564*** (0.146)	0.0127 (0.148)	0.440*** (0.138)
Woman	-0.434*** (0.112)	0.538*** (0.124)	-0.543*** (0.109)
Black	-0.0819 (0.167)	0.392* (0.203)	0.276* (0.160)
Age	0.00681* (0.00363)	-0.000766 (0.00393)	0.0115*** (0.00350)
Schooling	-0.242*** (0.0354)	0.0773** (0.0379)	-0.0489 (0.0334)
Income	0.0423 (0.0574)	-0.125** (0.0612)	-0.0973* (0.0553)
Evangelical	0.0937 (0.122)	-0.130 (0.136)	-0.0264 (0.118)
PT voter	-0.0108 (0.149)	0.316* (0.176)	-0.0973 (0.147)
Pseudo R ²	0.068	0.028	0.036
Wald chi2	115.4677	38.7538	62.70425
Observations	1933	1857	1925
N.Clusters	126	121	127

Standard errors in parentheses

* $p < 0.10$, ** $p < 0.05$, *** $p < 0.01$

Note: The unit of analysis is individual respondents. We run logit estimates with municipal-level fixed effects to account for unobservable characteristics at the municipal level that can affect individuals' attitudes towards VAW.